



**PARTS MANUAL FOR HAGIE CCI**  
**HAGIE MANUFACTURING COMPANY**

721 CENTRAL AVENUE WEST  
BOX 273  
CLARION, IOWA 50525-0273

(515) 532-2861

COVERS MACHINE SERIAL NUMBERS:

U80351515001-100

U80351516001-100

12-15 493674

To obtain the most current parts manual for your machine,  
please visit [www.hagiehelp.com](http://www.hagiehelp.com).

© 2015 Hagie Manufacturing Company. Clarion, Iowa USA



## COVER CROP INTERSEEDER IDENTIFICATION

Each Hagie Cover Crop Interseeder is identified by means of a serial number. This serial number denotes the model, the year in which it was built, and the number of the interseeder. To ensure prompt, efficient service when ordering parts or requesting service repairs from Hagie Manufacturing Company, record the serial number in the space provided below.

**NOTE:** Reference to left hand and right hand used throughout this manual refers to the position when seated in the operator's seat facing forward.

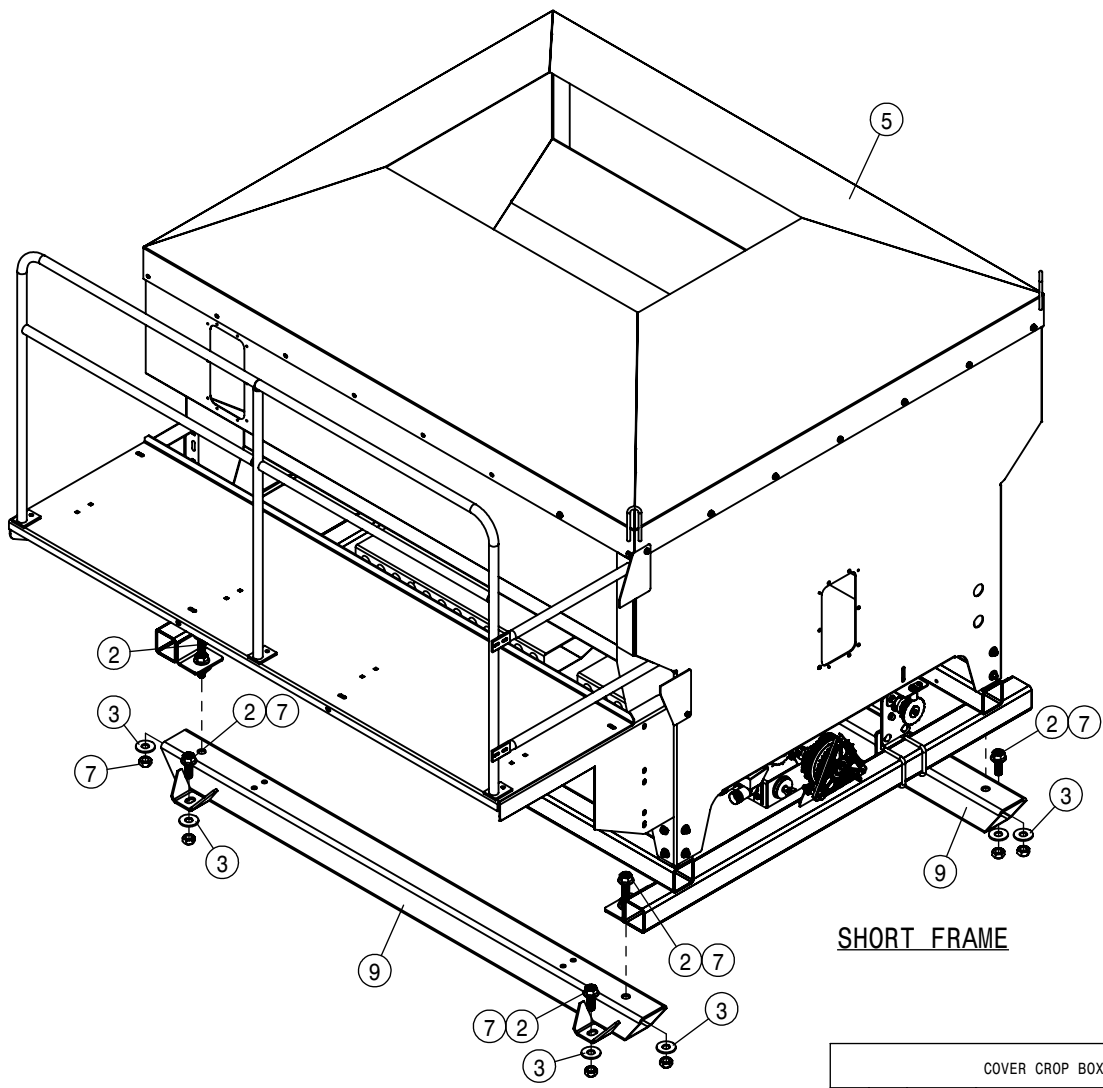
*This manual is not intended to be a complete guide for machine maintenance and repairs. If you are not properly trained to perform service on this machine, contact Hagie Customer Support for assistance. Improper maintenance or repair may result in property damage, personal injury, or death.*

CCI SERIAL NUMBER

---

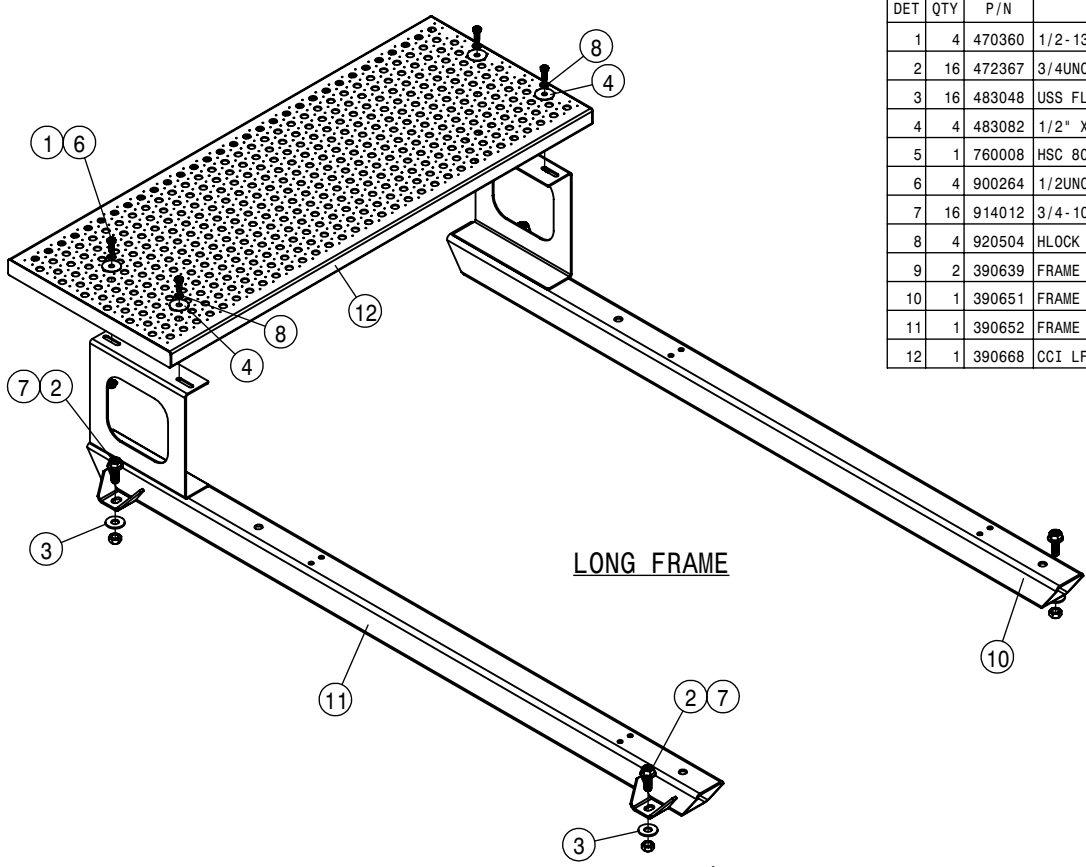
## TABLE OF CONTENTS

CCI BOX ASSEMBLY.....	4
CCI SCALE OPTION.....	5
CCI HYDRAULIC SYSTEM.....	6-9
CCI SEED TUBE ASSEMBLY.....	10-11
CCI QUICK ATTACH ASSEMBLY.....	12
CCI HOSING.....	13-14
CCI AG LEADER PRECISION.....	15
CCI RAVEN PRECISION.....	16

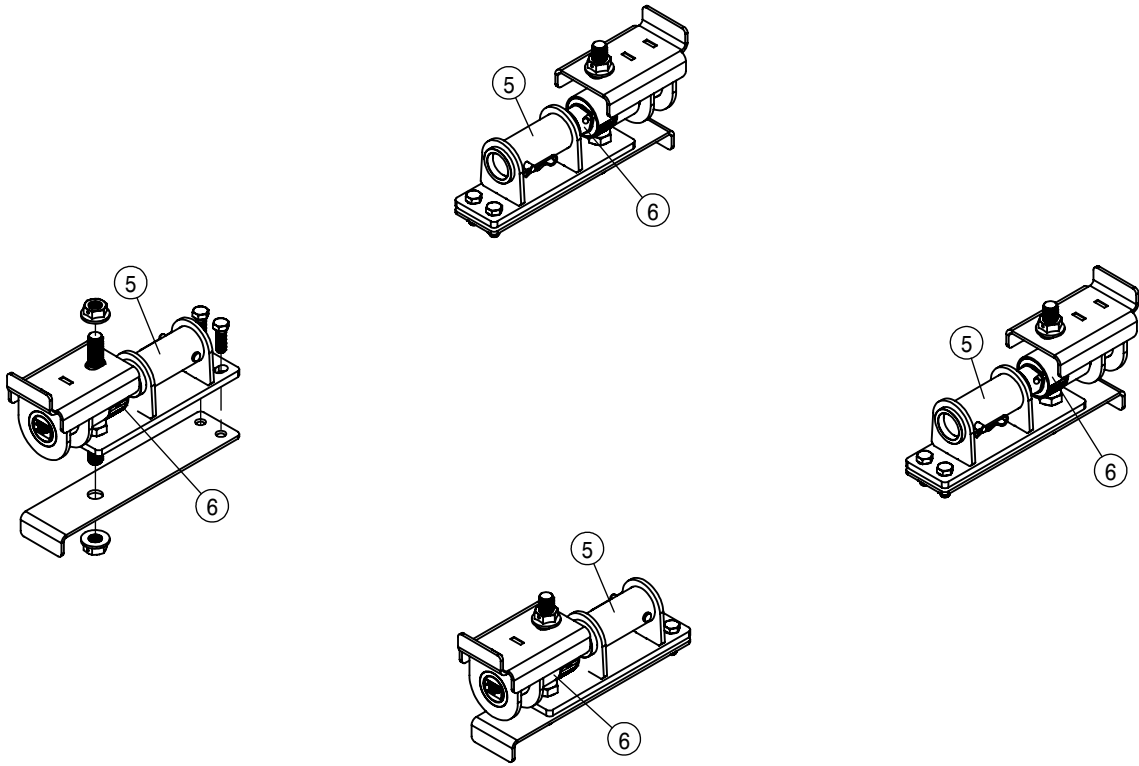


**SHORT FRAME**

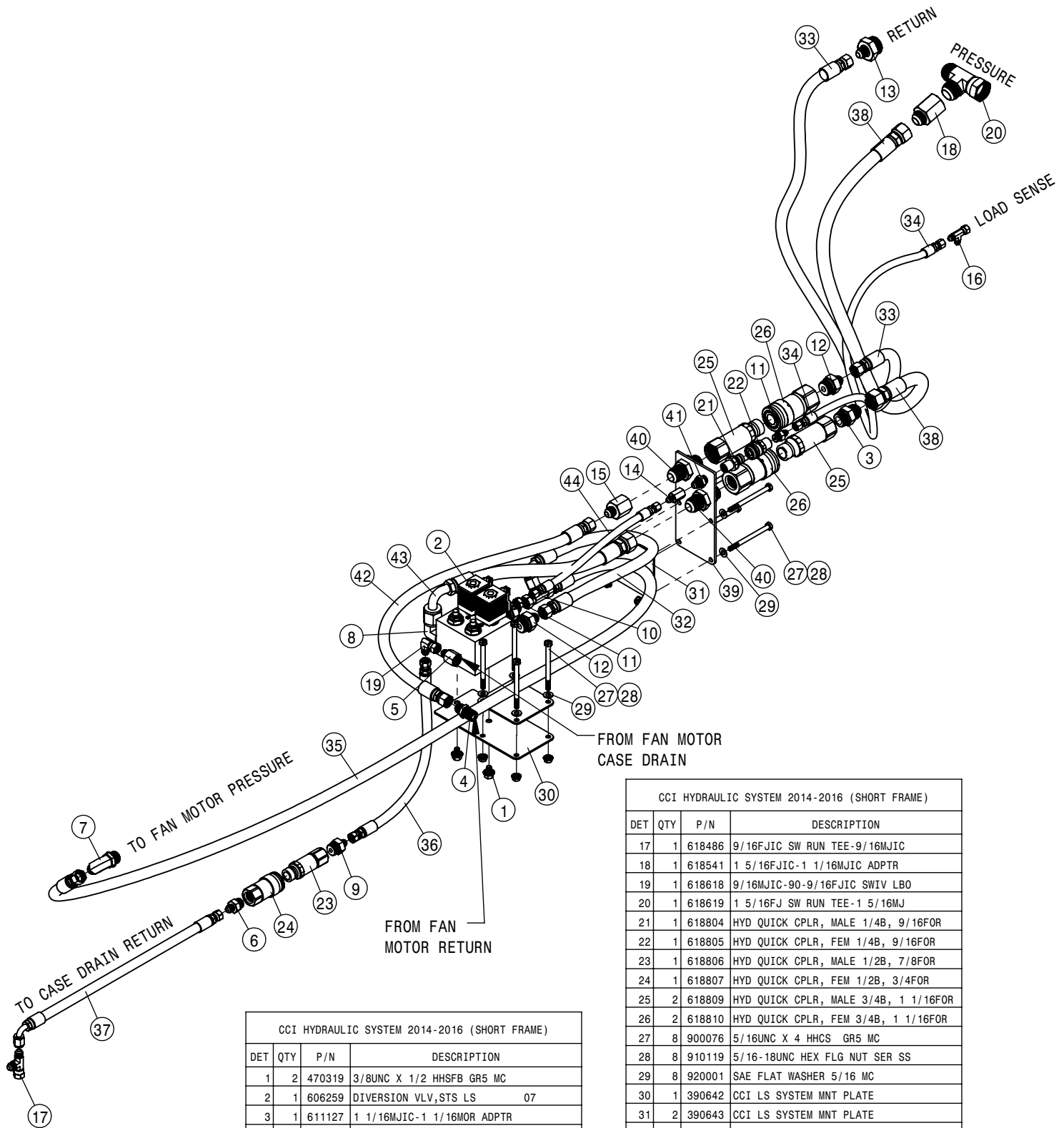
COVER CROP BOX ASSEMBLY			
DET	QTY	P/N	DESCRIPTION
1	4	470360	1/2-13UNC HEX FLG NUT SER MC GR5
2	16	472367	3/4UNC X 2 HHFB GR8 MC
3	16	483048	USS FLAT WASHER 3/4 MC
4	4	483082	1/2" X 2" FENDER WASHER
5	1	760008	HSC 80 CU.(18) 2.5" 2 CLCH
6	4	900264	1/2UNC X 1 1/4 HHCS GR5 MC
7	16	914012	3/4-10UNC STOVER NUT MC GR5
8	4	920504	HLOCK WASHER 1/2 MC
9	2	390639	FRAME MNTG GANDY BOX WLDT SF
10	1	390651	FRAME MT TUBE WLD LH GANDY LF
11	1	390652	FRAME MT TUBE WLD RH GANDY LF
12	1	390668	CCI LF PLATFORM WLD



**LONG FRAME**

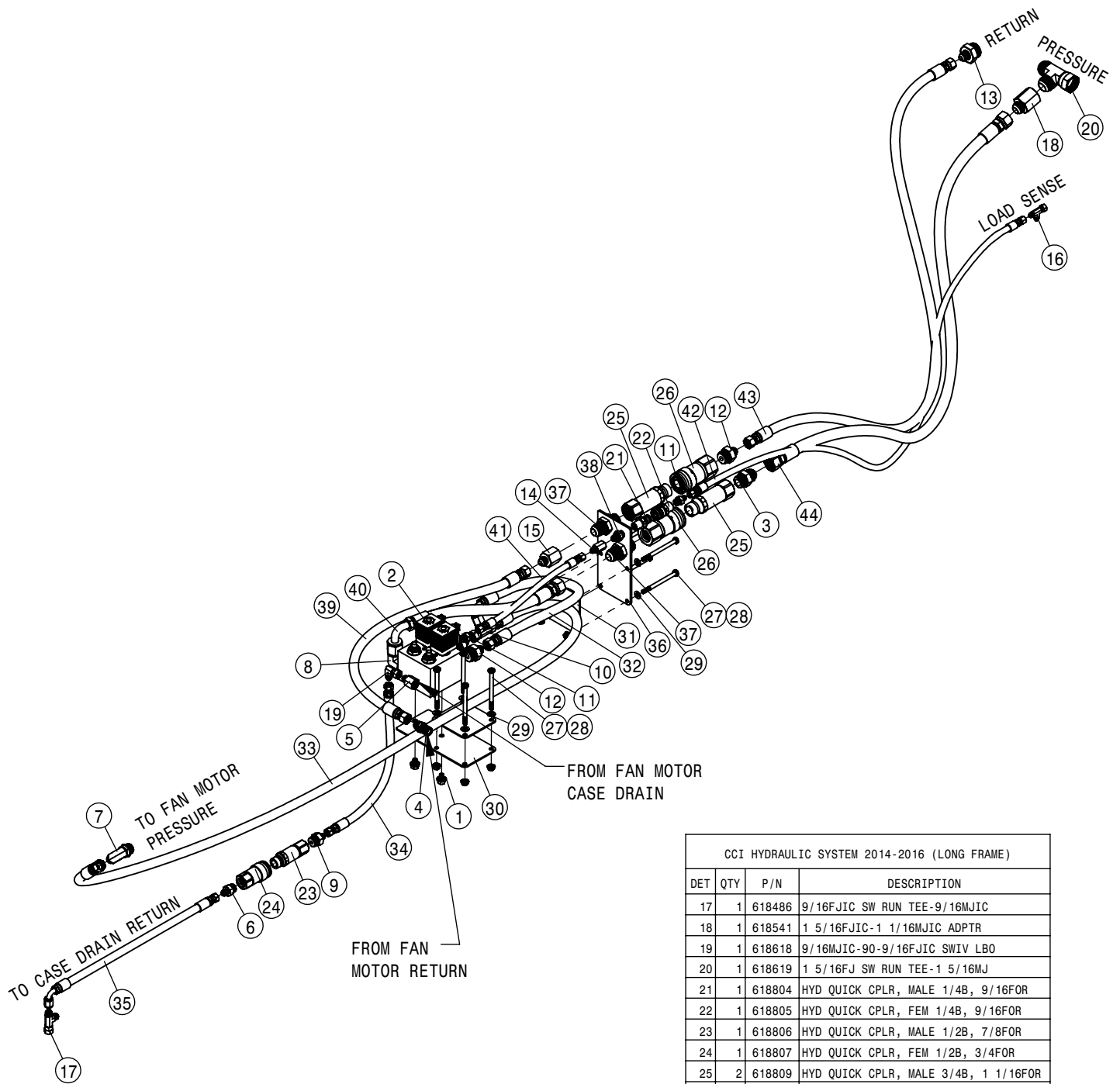


CCI SCALE OPTION			
DET	QTY	P/N	DESCRIPTION
NS	1	390664	CCI EZ2500V EZMATE/SER
NS	1	390665	CCI SCALE CABLE-PWR 6FT 2-WIRE
NS	1	390666	CCI KIT-1.5" RAM MTG EZIII
NS	1	390667	CCI MT-1.5 RAM W/U-BOLT
5	4	390662	CCI PACK-10K LC MOUNT
6	4	390663	CCI CELL-1.5 DB-16' EZ MATE



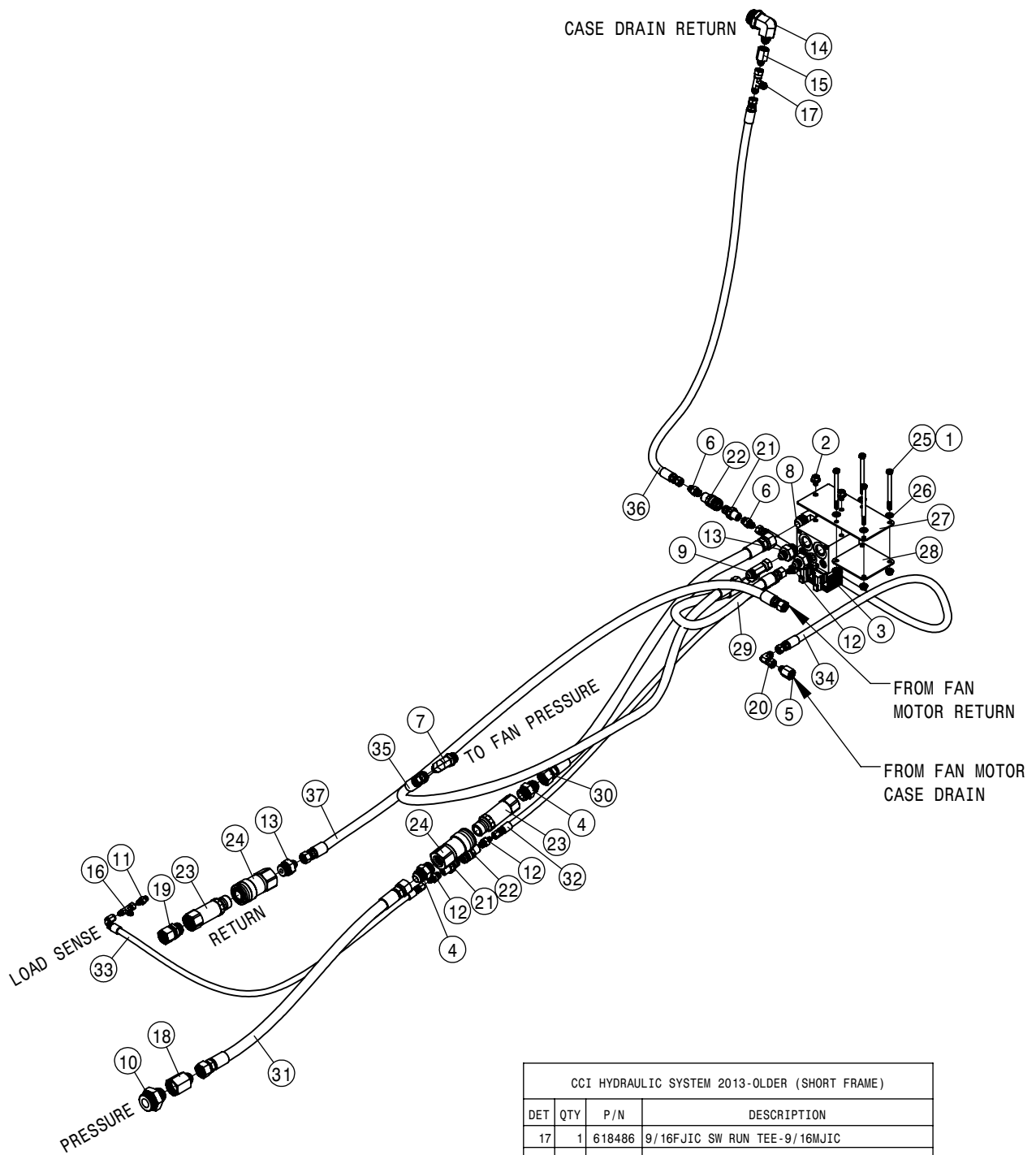
CCI HYDRAULIC SYSTEM 2014-2016 (SHORT FRAME)			
DET	QTY	P/N	DESCRIPTION
1	2	470319	3/8UNC X 1/2 HHSFB GR5 MC
2	1	606259	DIVERSION VLV,STS LS 07
3	1	611127	1 1/16MJIC-1 1/16MOR ADPTR
4	1	611147	3/4MJIC-1/2MNPT ADPTR
5	1	618021	9/16MJIC-3/8FNPT ADPTR
6	1	618109	9/16MJIC-3/4MOR ADPTR
7	1	618183	3/4MJIC-90-7/8MOR LBO
8	1	618248	1 1/16MJIC-90-1 1/16MOR LBO
9	1	618310	9/16MJIC-7/8MOR ADPTR
10	1	618451	3/4FJIC SW RUN TEE-3/4MJIC
11	2	618468	7/16MJIC-9/16MOR ADPTR
12	3	618469	3/4MJIC- 1 1/16MOR ADPTR
13	1	618470	3/4MJIC-1 5/16MOR ADPTR
14	1	618481	9/16FJIC-7/16MJIC ADPTR
15	1	618484	1 1/16FJIC-3/4MJIC ADPTR
16	1	618485	7/16FJIC SW RUN TEE-7/16MJIC

CCI HYDRAULIC SYSTEM 2014-2016 (SHORT FRAME)			
DET	QTY	P/N	DESCRIPTION
17	1	618486	9/16FJIC SW RUN TEE-9/16MJIC
18	1	618541	1 5/16FJIC-1 1/16MJIC ADPTR
19	1	618618	9/16MJIC-90-9/16FJIC SWIV LBO
20	1	618619	1 5/16FJ SW RUN TEE-1 5/16MJ
21	1	618804	HYD QUICK CPLR, MALE 1/4B, 9/16FOR
22	1	618805	HYD QUICK CPLR, FEM 1/4B, 9/16FOR
23	1	618806	HYD QUICK CPLR, MALE 1/2B, 7/8FOR
24	1	618807	HYD QUICK CPLR, FEM 1/2B, 3/4FOR
25	2	618809	HYD QUICK CPLR, MALE 3/4B, 1 1/16FOR
26	2	618810	HYD QUICK CPLR, FEM 3/4B, 1 1/16FOR
27	8	900076	5/16UNC X 4 HHCS GR5 MC
28	8	910119	5/16-18UNC HEX FLG NUT SER SS
29	8	920001	SAE FLAT WASHER 5/16 MC
30	1	390642	CCI LS SYSTEM MNT PLATE
31	2	390643	CCI LS SYSTEM MNT PLATE
32	1	617404	08-451TC-08FJX-08FJX-25 H/A
33	1	617405	08-451TC-08FJX-08FJX-61 H/A
34	1	617407	04-451TC-04FJX-04FJX-49 H/A
35	1	617403	08-451TC-08FJX-08FJX-75 H/A
36	1	617425	06-451TC-06FJX-06FJX90-18 H/A
37	1	617459	06-451TC-06FJX-06FJX90-21 H/A
38	1	617460	10-451TC-12FJX-12FJX-50 H/A
39	1	390673	CCI QUICK COUPLER MT PLT
40	2	618796	1 1/16MJ-1 1/16MOR BLKHD ADPT
41	1	618769	9/16MJIC-9/16MOR BLKHD ADPT
42	1	617422	08-451TC-08FJX-08FJX-33 H/A
43	1	617421	10-451TC-12FJX-12FJX90-18 H/A
44	1	617419	04-451TC-04FJX-04FJX-13 H/A



CCI HYDRAULIC SYSTEM 2014-2016 (LONG FRAME)			
DET	QTY	P/N	DESCRIPTION
1	2	470319	3/8UNC X 1/2 HHSFB GR5 MC
2	1	606259	DIVERSION VLV,STS LS 07
3	1	611127	1 1/16MJIC-1 1/16MOR ADPTR
4	1	611147	3/4MJIC-1/2MNPT ADPTR
5	1	618021	9/16MJIC-3/8FNPT ADPTR
6	1	618109	9/16MJIC-3/4MOR ADPTR
7	1	618183	3/4MJIC-90-7/8MOR LBO
8	1	618248	1 1/16MJIC-90-1 1/16MOR LBO
9	1	618310	9/16MJIC-7/8MOR ADPTR
10	1	618451	3/4FJIC SW RUN TEE-3/4MJIC
11	2	618468	7/16MJIC-9/16MOR ADPTR
12	3	618469	3/4MJIC- 1 1/16MOR ADPTR
13	1	618470	3/4MJIC-1 5/16MOR ADPTR
14	1	618481	9/16FJIC-7/16MJIC ADPTR
15	1	618484	1 1/16FJIC-3/4MJIC ADPTR
16	1	618485	7/16FJIC SW RUN TEE-7/16MJIC

CCI HYDRAULIC SYSTEM 2014-2016 (LONG FRAME)			
DET	QTY	P/N	DESCRIPTION
17	1	618486	9/16FJIC SW RUN TEE-9/16MJIC
18	1	618541	1 5/16FJIC-1 1/16MJIC ADPTR
19	1	618618	9/16MJIC-90-9/16FJIC SWIV LBO
20	1	618619	1 5/16FJ SW RUN TEE-1 5/16MJ
21	1	618804	HYD QUICK CPLR, MALE 1/4B, 9/16FOR
22	1	618805	HYD QUICK CPLR, FEM 1/4B, 9/16FOR
23	1	618806	HYD QUICK CPLR, MALE 1/2B, 7/8FOR
24	1	618807	HYD QUICK CPLR, FEM 1/2B, 3/4FOR
25	2	618809	HYD QUICK CPLR, MALE 3/4B, 1 1/16FOR
26	2	618810	HYD QUICK CPLR, FEM 3/4B, 1 1/16FOR
27	8	900076	5/16UNC X 4 HHCS GR5 MC
28	8	910119	5/16-18UNC HEX FLG NUT SER SS
29	8	920001	SAE FLAT WASHER 5/16 MC
30	1	390642	CCI LS SYSTEM MNT PLATE
31	2	390643	CCI LS SYSTEM MNT PLATE
32	1	617404	08-451TC-08FJX-08FJX-25 H/A
33	1	617403	08-451TC-08FJX-08FJX-75 H/A
34	1	617425	06-451TC-06FJX-06FJX90-18 H/A
35	1	617459	06-451TC-06FJX-06FJX90-21 H/A
36	1	390673	CCI QUICK COUPLER MT PLT
37	2	618796	1 1/16MJ-1 1/16MOR BLKHD ADPT
38	1	618769	9/16MJIC-9/16MOR BLKHD ADPT
39	1	617422	08-451TC-08FJX-08FJX-33 H/A
40	1	617421	10-451TC-12FJX-12FJX90-18 H/A
41	1	617419	04-451TC-04FJX-04FJX-13 H/A
42	1	617420	04-451TC-04FJX-04FJX-70 H/A
43	1	617423	08-451TC-08FJX-08FJX-80 H/A
44	1	617458	10-451TC-12FJX-12FJX-70 H/A

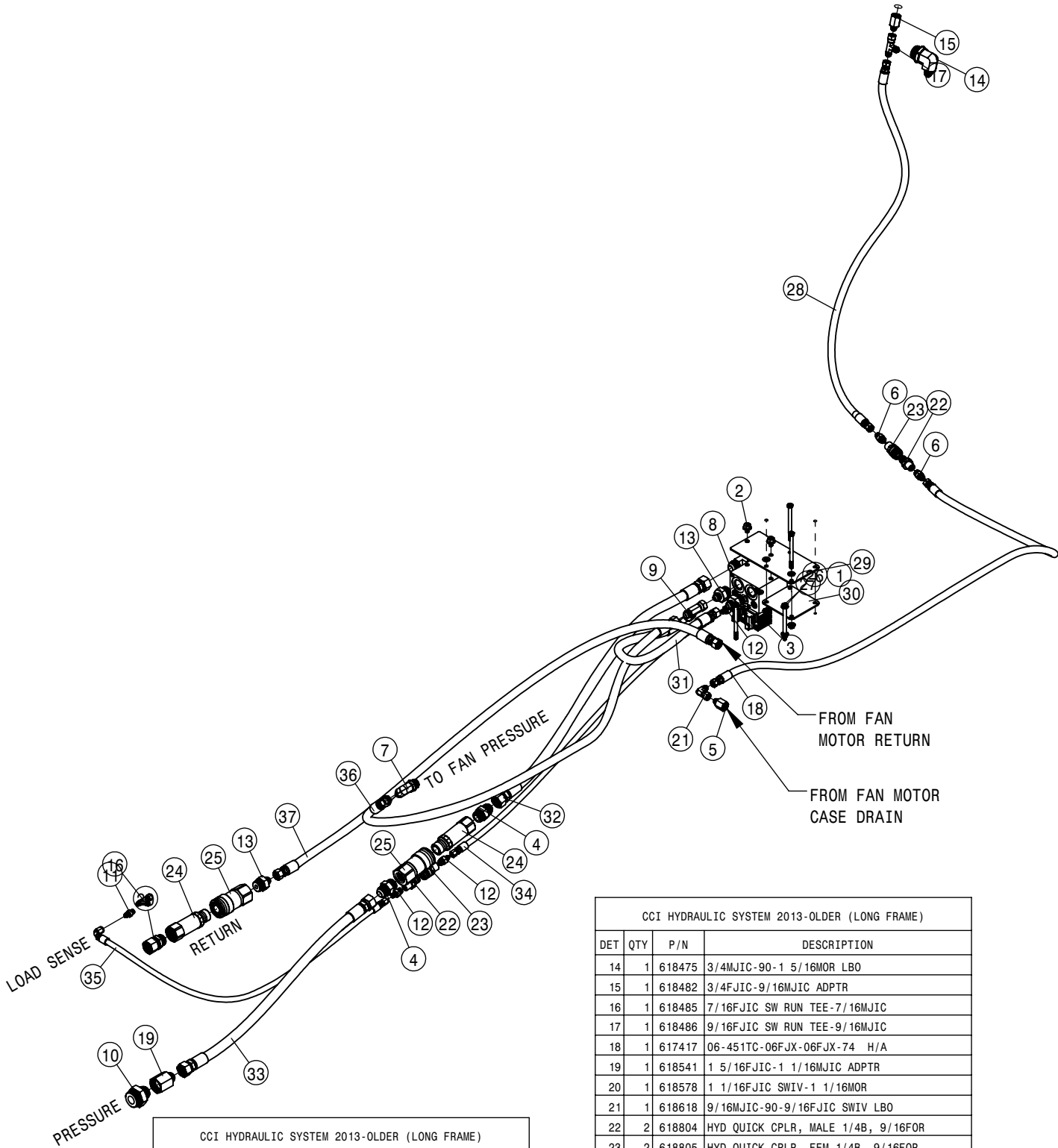


CCI HYDRAULIC SYSTEM 2013-OLDER (SHORT FRAME)			
DET	QTY	P/N	DESCRIPTION
1	4	470113	5/16-18UNC HEX FLG NUT SER MC GR5
2	2	470319	3/8UNC X 1/2 HHSFB GR5 MC
3	1	606259	DIVERSION VLV,STS LS 07
4	2	611127	1 1/16MJIC-1 1/16MOR ADPTR
5	1	618021	9/16MJIC-3/8FNPT ADPTR
6	2	618126	9/16MJIC-9/16MOR ADPTR
7	1	618183	3/4MJIC-90-7/8MOR LBO
8	1	618248	1 1/16MJIC-90-1 1/16MOR LBO
9	1	618451	3/4FJIC SW RUN TEE-3/4MJIC
10	1	618455	1 5/16MJIC-1 5/8 MOR ADPTR
11	1	618467	7/16MJIC-7/16MOR ADPTR
12	3	618468	7/16MJIC-9/16MOR ADPTR
13	3	618469	3/4MJIC- 1 1/16MOR ADPTR
14	1	618475	3/4MJIC-90-1 5/16MOR LBO
15	1	618482	3/4FJIC-9/16MJIC ADPTR
16	1	618485	7/16FJIC SW RUN TEE-7/16MJIC

CCI HYDRAULIC SYSTEM 2013-OLDER (SHORT FRAME)			
DET	QTY	P/N	DESCRIPTION
17	1	618486	9/16FJIC SW RUN TEE-9/16MJIC
18	1	618541	1 5/16FJIC-1 1/16MJIC ADPTR
19	1	618578	1 1/16FJIC SWIV-1 1/16MOR
20	1	618618	9/16MJIC-90-9/16FJIC SWIV LBO
21	2	618804	HYD QUICK CPLR, MALE 1/4B, 9/16FOR
22	2	618805	HYD QUICK CPLR, FEM 1/4B, 9/16FOR
23	2	618809	HYD QUICK CPLR, MALE 3/4B, 1 1/16FOR
24	2	618810	HYD QUICK CPLR, FEM 3/4B, 1 1/16FOR
25	4	900076	5/16UNC X 4 HHCS GR5 MC
26	4	920001	SAE FLAT WASHER 5/16 MC
27	1	390642	CCI LS SYSTEM MNT PLATE
28	1	390643	CCI LS SYSTEM MNT PLATE
29	1	617404	08-451TC-08FJX-08FJX-25 H/A
30	1	617409	10-451TC-12FJX-12FJX-35 H/A
31	1	617410	10-451TC-12FJX-12FJX-30 H/A
32	1	617411	04-451TC-04FJX-04FJX-39 H/A
33	1	617412	04-451TC-04FJX-04FJX90-36 H/A
34	1	617413	06-451TC-06FJX-06FJX-56 H/A
35	1	617414	08-451TC-08FJX-08FJX-51 H/A
36	1	617415	08-451TC-08FJX-08FJX-52 H/A
37	1	617416	08-451TC-08FJX-08FJX-57 H/A

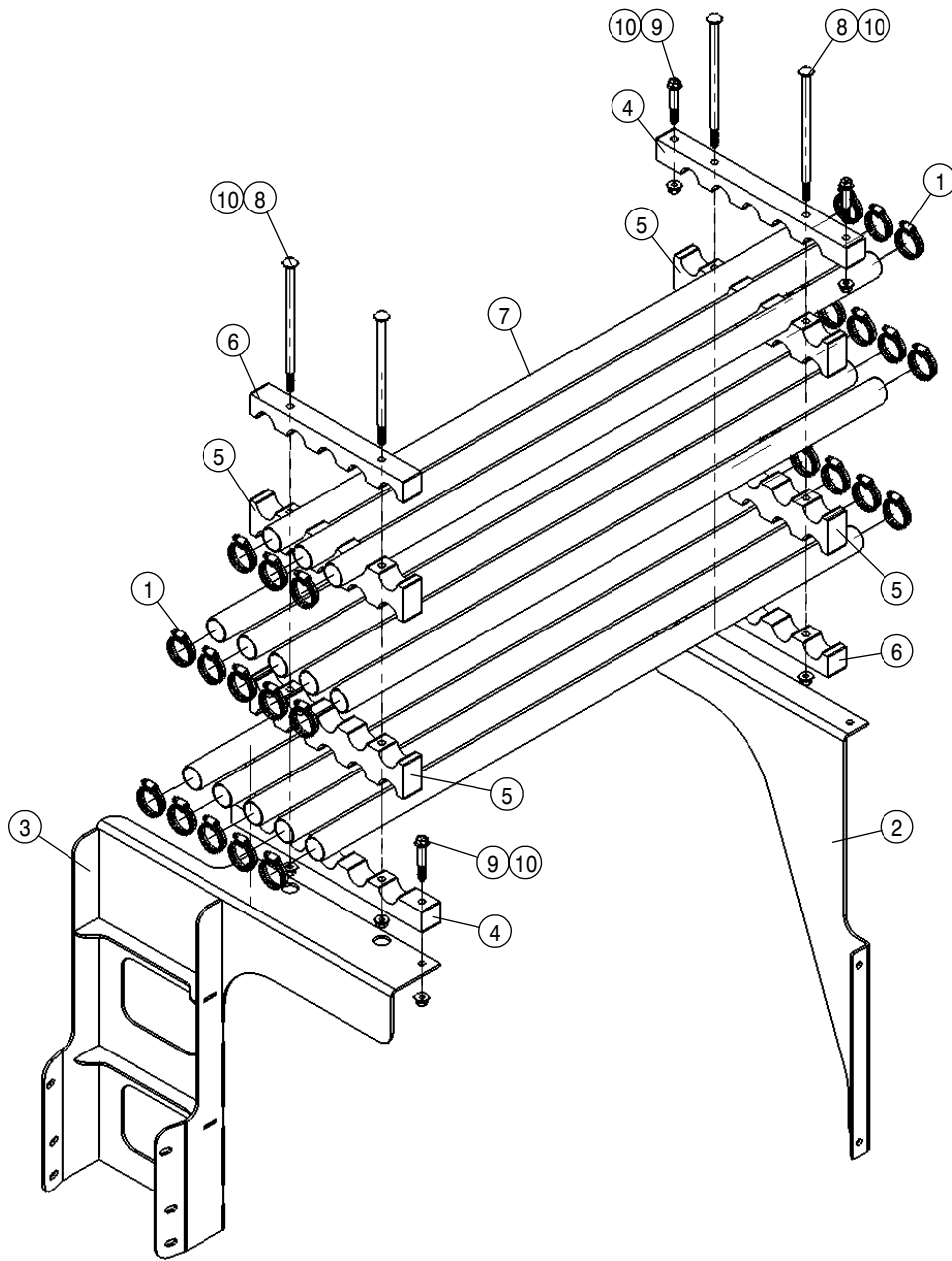


CASE DRAIN RETURN

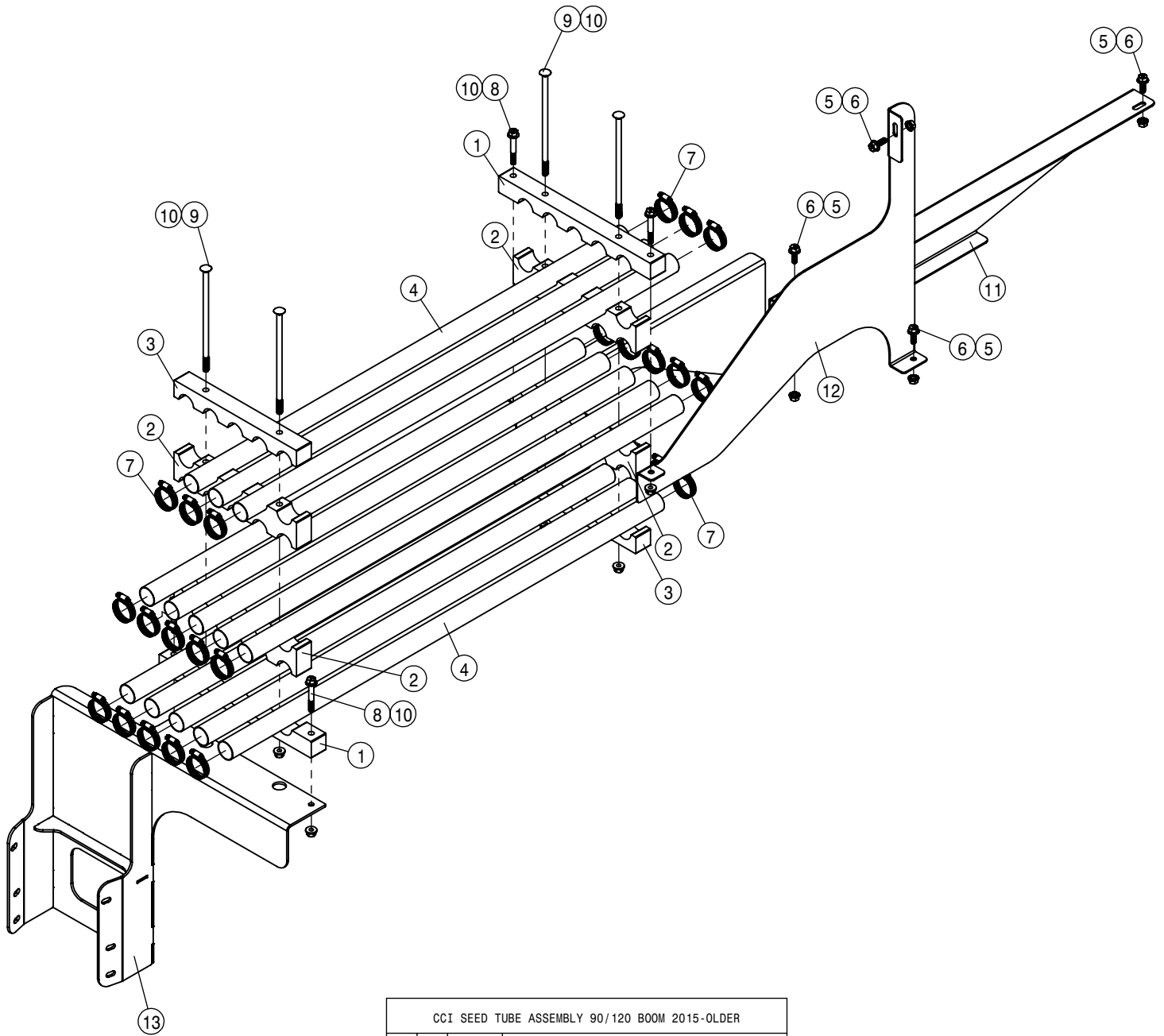


CCI HYDRAULIC SYSTEM 2013-OLDER (LONG FRAME)			
DET	QTY	P/N	DESCRIPTION
1	4	470113	5/16-18UNC HEX FLG NUT SER MC GR5
2	2	470319	3/8UNC X 1/2 HHSFB GR5 MC
3	1	606259	DIVERSION VLV,STS LS 07
4	2	611127	1 1/16MJIC-1 1/16MOR ADPTR
5	1	618021	9/16MJIC-3/8FNPT ADPTR
6	2	618126	9/16MJIC-9/16MOR ADPTR
7	1	618183	3/4MJIC-90-7/8MOR LBO
8	1	618248	1 1/16MJIC-90-1 1/16MOR LBO
9	1	618451	3/4FJIC SW RUN TEE-3/4MJIC
10	1	618455	1 5/16MJIC-1 5/8 MOR ADPTR
11	1	618467	7/16MJIC-7/16MOR ADPTR
12	3	618468	7/16MJIC-9/16MOR ADPTR
13	3	618469	3/4MJIC- 1 1/16MOR ADPTR

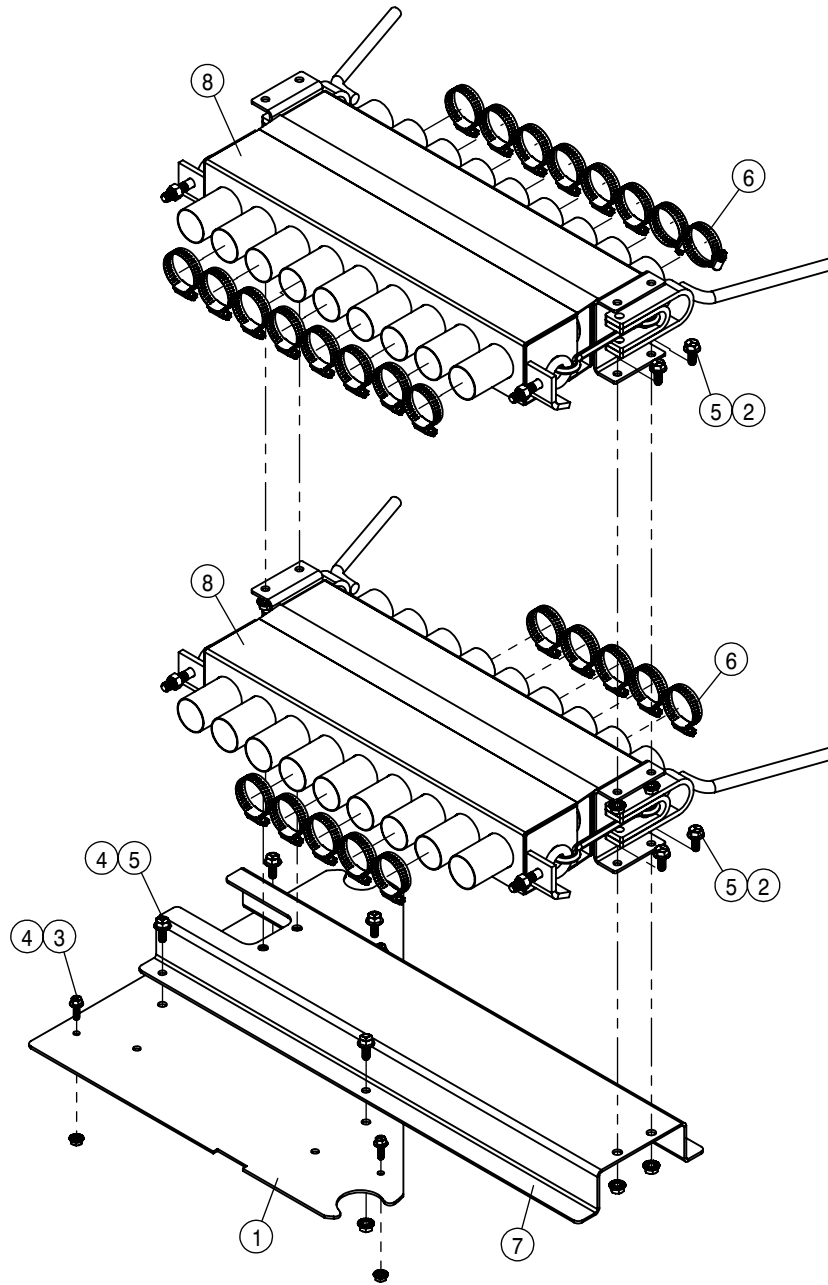
CCI HYDRAULIC SYSTEM 2013-OLDER (LONG FRAME)			
DET	QTY	P/N	DESCRIPTION
14	1	618475	3/4MJIC-90-1 5/16MOR LBO
15	1	618482	3/4FJIC-9/16MJIC ADPTR
16	1	618485	7/16FJIC SW RUN TEE-7/16MJIC
17	1	618486	9/16FJIC SW RUN TEE-9/16MJIC
18	1	617417	06-451TC-06FJX-06FJX-74 H/A
19	1	618541	1 5/16FJIC-1 1/16MJIC ADPTR
20	1	618578	1 1/16FJIC SWIV-1 1/16MOR
21	1	618618	9/16MJIC-90-9/16FJIC SWIV LBO
22	2	618804	HYD QUICK CPLR, MALE 1/4B, 9/16FOR
23	2	618805	HYD QUICK CPLR, FEM 1/4B, 9/16FOR
24	2	618809	HYD QUICK CPLR, MALE 3/4B, 1 1/16FOR
25	2	618810	HYD QUICK CPLR, FEM 3/4B, 1 1/16FOR
26	4	900076	5/16UNC X 4 HHCS GR5 MC
27	4	920001	SAE FLAT WASHER 5/16 MC
28	1	617418	06-451TC-06FJX-06FJX-42 H/A
29	1	390642	CCI LS SYSTEM MNT PLATE
30	1	390643	CCI LS SYSTEM MNT PLATE
31	1	617404	08-451TC-08FJX-08FJX-25 H/A
32	1	617409	10-451TC-12FJX-12FJX-35 H/A
33	1	617410	10-451TC-12FJX-12FJX-30 H/A
34	1	617411	04-451TC-04FJX-04FJX-39 H/A
35	1	617412	04-451TC-04FJX-04FJX90-36 H/A
36	1	617414	08-451TC-08FJX-08FJX-51 H/A
37	1	617416	08-451TC-08FJX-08FJX-57 H/A



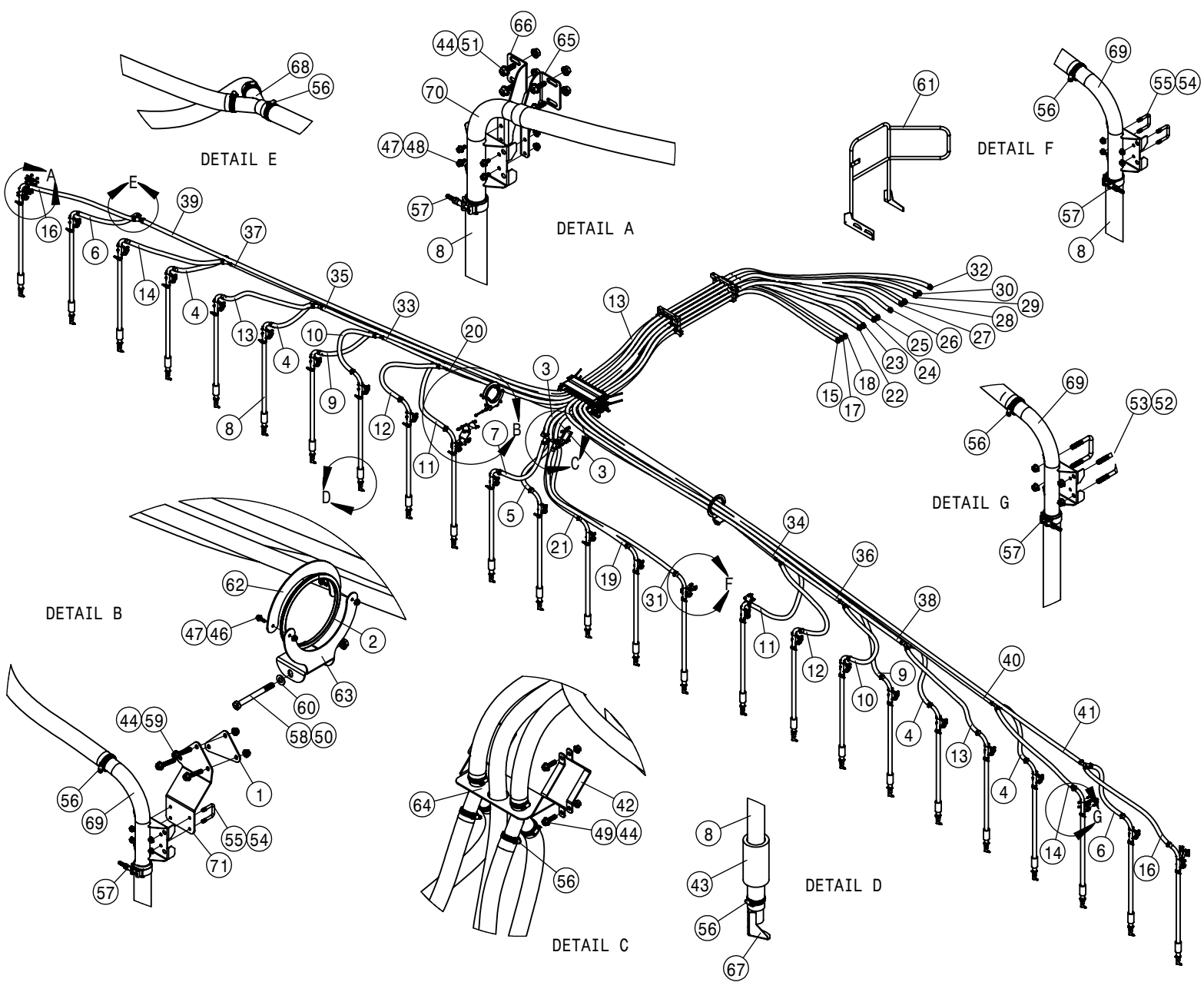
CCI SEED TUBE ASSEMBLY 90/120 BOOM 2016			
DET	QTY	P/N	DESCRIPTION
1	26	520087	HOSE CLAMP NO 20 STAINLESS
2	1	390656	CCI HOSE ASM MT BRKT STS16
3	1	390669	CCI CHASSIS MT MY16 AND FORWARD
4	2	390633	SEED TRANSN SUPT CLAMP BASE
5	4	390634	SEED TRANSN SUPT CLAMP MID
6	2	390635	SEED TRANSN SUPT CLAMP TOP
7	13	390636	SEED TRANSN TUBE
8	4	901150	3/8-16 X 9 CARRIAGE BOLT
9	4	900507	3/8UNC X 2 1/2 HHSFB GR5 MC
10	8	910106	3/8-16UNC CTRLK FLG NUT MC GR5



CCI SEED TUBE ASSEMBLY 90/120 BOOM 2015-OLDER			
DET	QTY	P/N	DESCRIPTION
1	2	390633	SEED TRANSN SUPT CLAMP BASE
2	4	390634	SEED TRANSN SUPT CLAMP MID
3	2	390635	SEED TRANSN SUPT CLAMP TOP
4	13	390636	SEED TRANSN TUBE
5	4	470087	3/8-16UNC HEX FLG NUT SER MC GR5
6	4	470460	3/8UNC X 1 HHSFB GR5 MC
7	26	520087	HOSE CLAMP NO 20 STAINLESS
8	4	900507	3/8UNC X 2 1/2 HHSFB GR5 MC
9	4	901150	3/8-16 X 9 CARRIAGE BOLT
10	8	910106	3/8-16UNC CTRLK FLG NUT MC GR5
11	1	390637	SEED TRANSN SUPT BRKT OTR BOX
12	1	390638	SEED TRANSN SUPT BRKT INR BOX
13	1	390627	SEED TRANSITION SUPT BRKT WLD



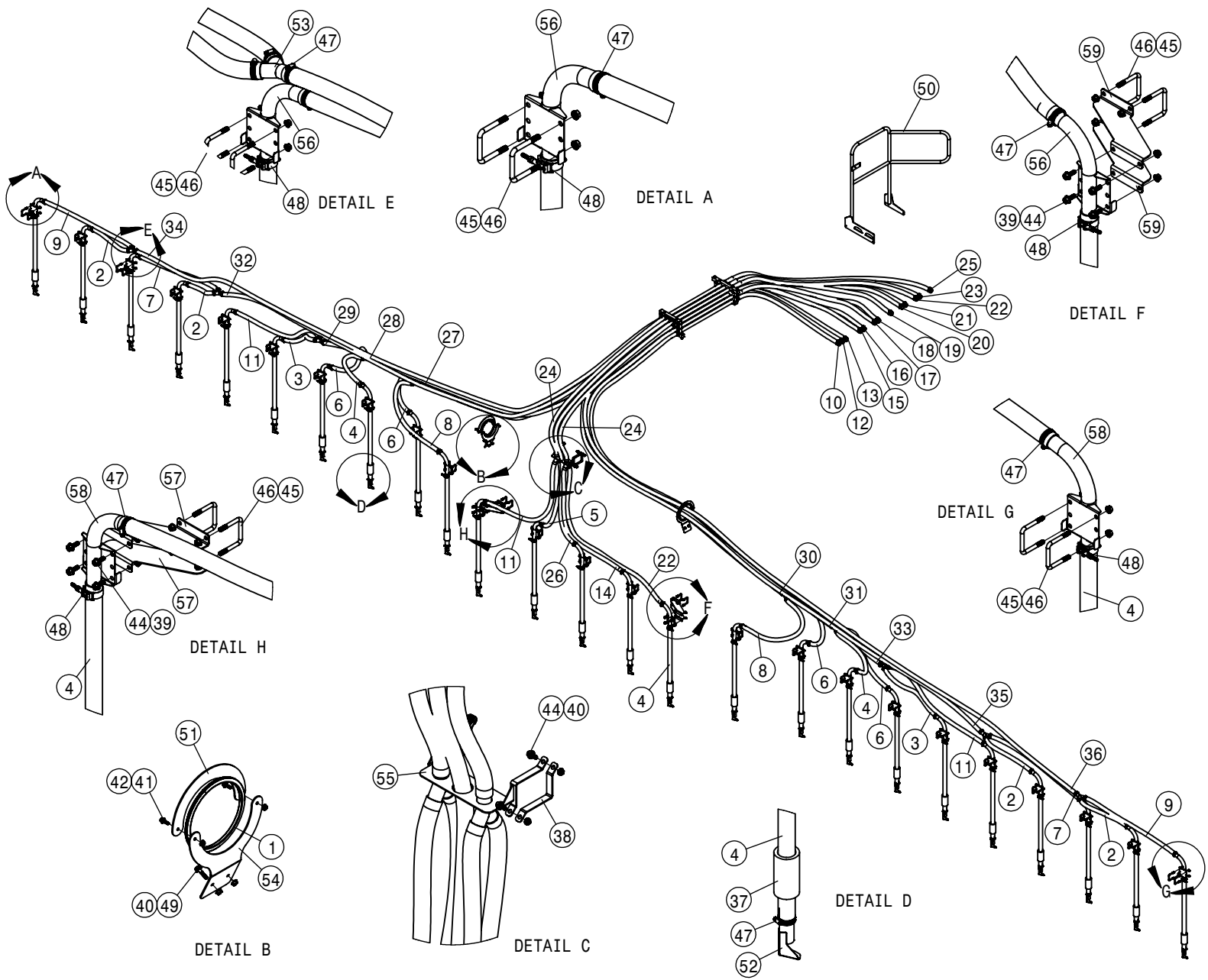
CCI QUICK ATTACH ASSEMBLY 90° BOOM				
DET	QTY	P/N	DESCRIPTION	
1	1	390624	UPPER LIFTARM BUSS COVER, CCI	
2	12	470113	5/16-18UNC HEX FLG NUT SER MC GR5	
3	3	470118	1/4UNC X 3/4 HHSFB GR5 MC	
4	3	470121	1/4-20UNC HEX FLG NUT SER MC GR5	
5	12	470233	5/16UNC X 3/4 HHSFB GR5 MC	
6	26	520087	HOSE CLAMP NO 20 STAINLESS	
7	1	390623	QUICK ATTACH MOUNT BRKT TRANS	
8	2	390653	QUICK COUPLER 9 OUT 1 1/2" TUBE	



CCI HOSEING 60FT SPACING, 90FT BOOM			
DET	QTY	P/N	DESCRIPTION
1	2	169163	CCI DROP TUBE BRKT PLT
2	2	193016	QUICKEDGE TRIM .060 TO .170
3	2	195976-024	HOSE 1 1/2ID - 1/8W CLEAR VINYL
4	4	195976-032	HOSE 1 1/2ID - 1/8W CLEAR VINYL
5	1	195976-033	HOSE 1 1/2ID - 1/8W CLEAR VINYL
6	2	195976-034	HOSE 1 1/2ID - 1/8W CLEAR VINYL
7	1	195976-035	HOSE 1 1/2ID - 1/8W CLEAR VINYL
8	25	195976-036	HOSE 1 1/2ID - 1/8W CLEAR VINYL
9	2	195976-040	HOSE 1 1/2ID - 1/8W CLEAR VINYL
10	2	195976-044	HOSE 1 1/2ID - 1/8W CLEAR VINYL
11	2	195976-052	HOSE 1 1/2ID - 1/8W CLEAR VINYL
12	2	195976-054	HOSE 1 1/2ID - 1/8W CLEAR VINYL
13	15	195976-056	HOSE 1 1/2ID - 1/8W CLEAR VINYL
14	2	195976-058	HOSE 1 1/2ID - 1/8W CLEAR VINYL
15	1	195976-059	HOSE 1 1/2ID - 1/8W CLEAR VINYL
16	2	195976-061	HOSE 1 1/2ID - 1/8W CLEAR VINYL
17	1	195976-063	HOSE 1 1/2ID - 1/8W CLEAR VINYL
18	1	195976-066	HOSE 1 1/2ID - 1/8W CLEAR VINYL
19	1	195976-072	HOSE 1 1/2ID - 1/8W CLEAR VINYL
20	1	195976-073	HOSE 1 1/2ID - 1/8W CLEAR VINYL
21	1	195976-074	HOSE 1 1/2ID - 1/8W CLEAR VINYL
22	1	195976-076	HOSE 1 1/2ID - 1/8W CLEAR VINYL
23	1	195976-077	HOSE 1 1/2ID - 1/8W CLEAR VINYL
24	1	195976-079	HOSE 1 1/2ID - 1/8W CLEAR VINYL

CCI HOSEING 60FT SPACING, 90FT BOOM			
DET	QTY	P/N	DESCRIPTION
25	1	195976-081	HOSE 1 1/2ID - 1/8W CLEAR VINYL
26	1	195976-088	HOSE 1 1/2ID - 1/8W CLEAR VINYL
27	1	195976-094	HOSE 1 1/2ID - 1/8W CLEAR VINYL
28	1	195976-097	HOSE 1 1/2ID - 1/8W CLEAR VINYL
29	1	195976-099	HOSE 1 1/2ID - 1/8W CLEAR VINYL
30	1	195976-102	HOSE 1 1/2ID - 1/8W CLEAR VINYL
31	1	195976-106	HOSE 1 1/2ID - 1/8W CLEAR VINYL
32	1	195976-108	HOSE 1 1/2ID - 1/8W CLEAR VINYL
33	1	195976-116	HOSE 1 1/2ID - 1/8W CLEAR VINYL
34	1	195976-142	HOSE 1 1/2ID - 1/8W CLEAR VINYL
35	1	195976-150	HOSE 1 1/2ID - 1/8W CLEAR VINYL
36	1	195976-187	HOSE 1 1/2ID - 1/8W CLEAR VINYL
37	1	195976-203	HOSE 1 1/2ID - 1/8W CLEAR VINYL
38	1	195976-222	HOSE 1 1/2ID - 1/8W CLEAR VINYL
39	1	195976-258	HOSE 1 1/2ID - 1/8W CLEAR VINYL
40	1	195976-275	HOSE 1 1/2ID - 1/8W CLEAR VINYL
41	1	195976-327	HOSE 1 1/2ID - 1/8W CLEAR VINYL
42	2	390607	SEED DIST MANIFOLD STRAP
43	25	390608	WEIGHT ROW DROP
44	18	470087	3/8-16UNC HEX FLG NUT SER MC GR5
45	2	470113	5/16-18UNC HEX FLG NUT SER MC GR5
46	4	470118	1/4UNC X 3/4 HHSFB GR5 MC
47	10	470121	1/4-20UNC HEX FLG NUT SER MC GR5
48	8	470122	1/4UNC X 1/2 HHSFB GR5 MC

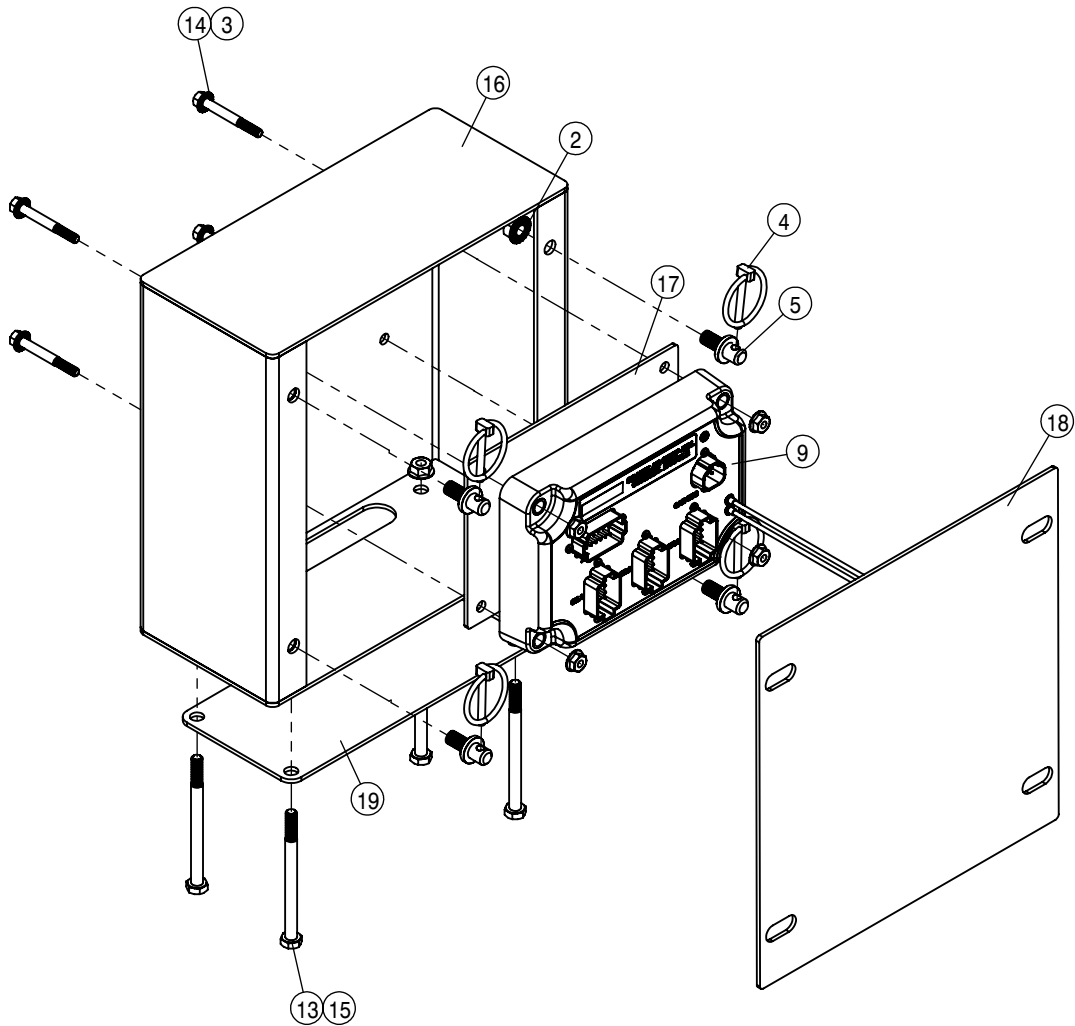
CCI HOSEING 60FT SPACING, 90FT BOOM			
DET	QTY	P/N	DESCRIPTION
49	4	470329	3/8UNC X 1 1/4 HHSFB GR5 MC
50	2	470360	1/2-13UNC HEX FLG NUT SER MC GR5
51	8	470460	3/8UNC X 1 HHSFB GR5 MC
52	64	472029	3/8UNC SERR FLANGE NUT SS
53	32	472037	3/8UNC-2ID-2.63 U-BOLT SQ,ZINC
54	28	473832	1/4UNC HEX FLANGE LOCK NUT SS
55	14	473979	1/4UNC-1 1/8ID-1 1/2U-BOLTSQSS
56	92	520087	HOSE CLAMP NO 20 STAINLESS
57	25	520132	1.62/1.87 T-BOLT HOSE CLAMP SS
58	2	900276	1/2UNC X 5 HHCS GR5 MC
59	6	900506	3/8UNC X 2 HHSFB GR5 MC FT
60	2	920004	SAE FLAT WASHER 1/2 MC
61	1	169161	CCI HANDRAIL ASSY
62	2	390619	BRACKET HOSE RETNR PIVOT TOP
63	2	390618	BRACKET HOSE RETNR PIVOT BASE
64	1	390614	SEED DIST MANIFOLD WELD TRANS
65	2	390611	ROW DROP CCI OTR LH BM MNT 90
66	2	390613	ROW DROP CCI OTR RH BM MNT 90
67	25	390647	SEED DEFLECTOR WLDT ROW DROP
68	10	390604	SPLITTER SEED HOSE 1.50"OD WELD
69	14	390603	ROW DROP BOOM MT LH WLD 90'
70	11	390600	ROW DROP BOOM MT RH WLD 90'
71	2	169162	CCI DROP TUBE BRKT



CCI HOSEING 60FT SPACING, 120FT BOOM			
DET	QTY	P/N	DESCRIPTION
1	2	193016	QUICKEDGE TRIM .060 TO .170
2	4	195976-028	HOSE 1 1/2ID - 1/8W CLEAR VINYL
3	2	195976-034	HOSE 1 1/2ID - 1/8W CLEAR VINYL
4	27	195976-036	HOSE 1 1/2ID - 1/8W CLEAR VINYL
5	1	195976-037	HOSE 1 1/2ID - 1/8W CLEAR VINYL
6	4	195976-039	HOSE 1 1/2ID - 1/8W CLEAR VINYL
7	2	195976-055	HOSE 1 1/2ID - 1/8W CLEAR VINYL
8	2	195976-056	HOSE 1 1/2ID - 1/8W CLEAR VINYL
9	2	195976-057	HOSE 1 1/2ID - 1/8W CLEAR VINYL
10	1	195976-059	HOSE 1 1/2ID - 1/8W CLEAR VINYL
11	3	195976-062	HOSE 1 1/2ID - 1/8W CLEAR VINYL
12	1	195976-063	HOSE 1 1/2ID - 1/8W CLEAR VINYL
13	1	195976-066	HOSE 1 1/2ID - 1/8W CLEAR VINYL
14	1	195976-068	HOSE 1 1/2ID - 1/8W CLEAR VINYL
15	1	195976-076	HOSE 1 1/2ID - 1/8W CLEAR VINYL
16	1	195976-077	HOSE 1 1/2ID - 1/8W CLEAR VINYL
17	1	195976-079	HOSE 1 1/2ID - 1/8W CLEAR VINYL
18	1	195976-081	HOSE 1 1/2ID - 1/8W CLEAR VINYL
19	1	195976-088	HOSE 1 1/2ID - 1/8W CLEAR VINYL
20	1	195976-094	HOSE 1 1/2ID - 1/8W CLEAR VINYL

CCI HOSEING 60FT SPACING, 120FT BOOM			
DET	QTY	P/N	DESCRIPTION
21	1	195976-097	HOSE 1 1/2ID - 1/8W CLEAR VINYL
22	2	195976-099	HOSE 1 1/2ID - 1/8W CLEAR VINYL
23	1	195976-102	HOSE 1 1/2ID - 1/8W CLEAR VINYL
24	2	195976-103	HOSE 1 1/2ID - 1/8W CLEAR VINYL
25	1	195976-108	HOSE 1 1/2ID - 1/8W CLEAR VINYL
26	1	195976-145	HOSE 1 1/2ID - 1/8W CLEAR VINYL
27	1	195976-152	HOSE 1 1/2ID - 1/8W CLEAR VINYL
28	1	195976-182	HOSE 1 1/2ID - 1/8W CLEAR VINYL
29	1	195976-216	HOSE 1 1/2ID - 1/8W CLEAR VINYL
30	1	195976-221	HOSE 1 1/2ID - 1/8W CLEAR VINYL
31	1	195976-248	HOSE 1 1/2ID - 1/8W CLEAR VINYL
32	1	195976-281	HOSE 1 1/2ID - 1/8W CLEAR VINYL
33	1	195976-282	HOSE 1 1/2ID - 1/8W CLEAR VINYL
34	1	195976-335	HOSE 1 1/2ID - 1/8W CLEAR VINYL
35	1	195976-350	HOSE 1 1/2ID - 1/8W CLEAR VINYL
36	1	195976-405	HOSE 1 1/2ID - 1/8W CLEAR VINYL
37	25	390608	WEIGHT ROW DROP
38	2	390657	SEED DIST MANIFOLD STRAP 120
39	8	470087	3/8-16UNC HEX FLG NUT SER MC GR5
40	8	470113	5/16-18UNC HEX FLG NUT SER MC GR5

CCI HOSEING 60FT SPACING, 120FT BOOM			
DET	QTY	P/N	DESCRIPTION
41	4	470118	1/4UNC X 3/4 HHSFB GR5 MC
42	4	470121	1/4-20UNC HEX FLG NUT SER MC GR5
43	2	470234	5/16UNC X 1 HHSFB GR5 MC
44	12	470460	3/8UNC X 1 HHSFB GR5 MC
45	100	472029	3/8UNC SERR FLANGE NUT SS
46	50	472036	3/8UNC-2.63ID-2.88 U-BOLT SQ
47	93	520087	HOSE CLAMP NO 20 STAINLESS
48	25	520132	1.62/1.87 T-BOLT HOSE CLAMP SS
49	2	900490	5/16UNC X 1 1/4 HHSFB SS
50	1	169161	CCI HANDRAIL ASSY
51	2	390619	BRACKET HOSE RETNR PIVOT TOP
52	25	390647	SEED DEFLECTOR WLDT ROW DROP
53	10	390604	SPLITER SEED HOSE 1.50"OD WELD
54	2	390660	BRKT HOSE RETNR PIVOT 120
55	1	390659	SEED DIST MANIFOLD BRKT 120
56	13	390648	ROW DROP BOOM MT LH WLD
57	2	390602	ROW DROP CCI OTR RH BM MT 120
58	12	390649	ROW DROP BOOM MT RH WLD
59	2	390601	ROW DROP CCI OTR LH BM MT 120



CCI AG LEADER PRECISION			
DET	QTY	P/N	DESCRIPTION
NS	1	294089	CCI STRIP TILL MOD PWR CBL
2	4	470087	3/8-16UNC HEX FLG NUT SER MC GR5
3	4	470121	1/4-20UNC HEX FLG NUT SER MC GR5
4	4	470335	LINCHPIN, 3/16 X 1 1/4 GRIP
5	4	470520	HANGER PIN, 3/8UNC x .437D x .500L
NS	1	693218	AG LDR IMPLEMENT PLUG
NS	1	694088	CCI AG LDR REMOTE SWITCH
NS	1	694090	CCI AG LDR WP TO DEUTSCH CBL
9	1	694091	AG LDR STRIP TILL MOD
NS	1	694093	AG LDR AUX INPUT MOD
NS	1	694094	AG LDR ENCODER CCI
NS	1	694102	CCI AG LDR CHANNEL CBL
13	4	900076	5/16UNC X 4 HHCS GR5 MC
14	4	900464	1/4UNC X 2 HHSFB SS
15	4	910119	5/16-18UNC HEX FLG NUT SER SS
16	1	694087	CCI PRECISION BOX WLD
17	1	694092	CCI PRECISION MOD MNT PLT
18	1	694085	CCI PRECISION BOX COVER
19	1	694086	CCI PRECISION BOX STRAP MT PLT
NS	1	294302	HARNESS, CCI AGLEADER/HAGIE

CCI RAVEN PRECISION 2016			
DET	QTY	P/N	DESCRIPTION
NS	1	294307	HARNESS, CCI RAVEN/HAGIE
NS	1	694094	AG LDR ENCODER CCI
NS	1	694096	RVN CCI READY CBL '16
NS	1	694097	CCI RVN CBL 10' EXT SPEED CBL
NS	1	694098	CCI RVN CBL ADAPTER ASY
NS	1	694099	CCI RVN CBL 5 SENSOR GRANULAR
NS	1	694100	CCI RVN CBL 12' FLOW GRAN 3 CLUTCH
NS	1	694101	CCI RVN CBL CON/SEN GRAN 3 CLUTCH
NS	1	694103	CCI RVN SCS 600 RATE CNTRL

CCI RAVEN PRECISION 2014-2015			
DET	QTY	P/N	DESCRIPTION
NS	1	294307	HARNESS, CCI RAVEN/HAGIE
NS	1	694094	AG LDR ENCODER CCI
NS	1	694095	RVN CCI READY CBL '14/15
NS	1	694097	CCI RVN CBL 10' EXT SPEED CBL
NS	1	694098	CCI RVN CBL ADAPTER ASY
NS	1	694099	CCI RVN CBL 5 SENSOR GRANULAR
NS	1	694100	CCI RVN CBL 12' FLOW GRAN 3 CLUTCH
NS	1	694101	CCI RVN CBL CON/SEN GRAN 3 CLUTCH
NS	1	694103	CCI RVN SCS 600 RATE CNTRL



# Notes:



# PARTS ORDER FAX

**Fax**  
**24 hours**  
**a day**  
**7 days**  
**a week\***

Ph. 1 (800) 247-4885

Fx. 1 (515) 532-3553

Photocopy and fax to Hagie Customer Support Department

**ORDERED BY/BILL TO:**

Name \_\_\_\_\_

Co. Name \_\_\_\_\_

Street \_\_\_\_\_

City, St, Zip \_\_\_\_\_

Ph. \_\_\_\_\_ Fx. \_\_\_\_\_

**SHIP TO:**

Name \_\_\_\_\_

Co. Name \_\_\_\_\_

Street \_\_\_\_\_

City, St, Zip \_\_\_\_\_

Ph. \_\_\_\_\_ Fx. \_\_\_\_\_

HOW SHIP:  UPS Ground  Next Day  2 Day  3 Day  Other \_\_\_\_\_

If "HOW SHIP" is left blank, parts will be sent UPS ground service. If part is over 150 pounds, an independent motor freight company will be used.

**PAYMENT:**  Hagie Account #\*\* \_\_\_\_\_

C.O.D

American Express  Discover  Visa  Master Card

Signature: \_\_\_\_\_

name as appears on card: \_\_\_\_\_

card no. \_\_\_\_\_ exp. date \_\_\_\_\_

Year and Model No. \_\_\_\_\_

Serial No. \_\_\_\_\_

Item Serial No. (if necessary):

Engine (include type) \_\_\_\_\_

Hydrostatic Pump (s) \_\_\_\_\_

Torque Hub \_\_\_\_\_

LF  RF  LR  RR

Wheel Motor \_\_\_\_\_

LF  RF  LR  RR

HAGIE Part No.	Qty.	Description

Check here if you want phone confirmation of parts order.

\* Orders received before 3:00 p.m., CST will be processed the same business day.  
Regular business hours are Monday through Friday, 7:00 a.m. through 5:00 p.m..

\*\* If you do not have a Hagie account number, contact the Hagie Customer Support Department and you will be issued one.