

HAGIE
MODEL 470 HI-TRACTOR

PARTS
MANUAL

HAGIE MANUFACTURING COMPANY

CLARION, IOWA

50525

Phone 515-532-2861

PARTS BOOK

HAGIE MODEL 470 HI-TRACTOR

This Parts Manual contains important information regarding your new Hagie Model 470 Hi-Tractor.

In order to obtain maximum efficiency and economical performance from your new machine, we suggest that you become familiar with the contents of this manual and follow the recommendations outlined therein.

Hagie Manufacturing reserves the right to make any changes in the model, or the design, or any accessories and part of any subsequent new machine at any time, without creating any obligation on the part of either the dealer or manufacturer, to make corresponding changes in the machine described and covered by the order, either before or subsequent to delivery to the purchaser.

We do want to take this opportunity to thank you for choosing a Hagie Hi-Tractor and assure you of our continuing interest in its profitable and satisfactory operation for you. If at any time anyone from Hagie Manufacturing can be of assistance to you, please call on us.

Yours truly,



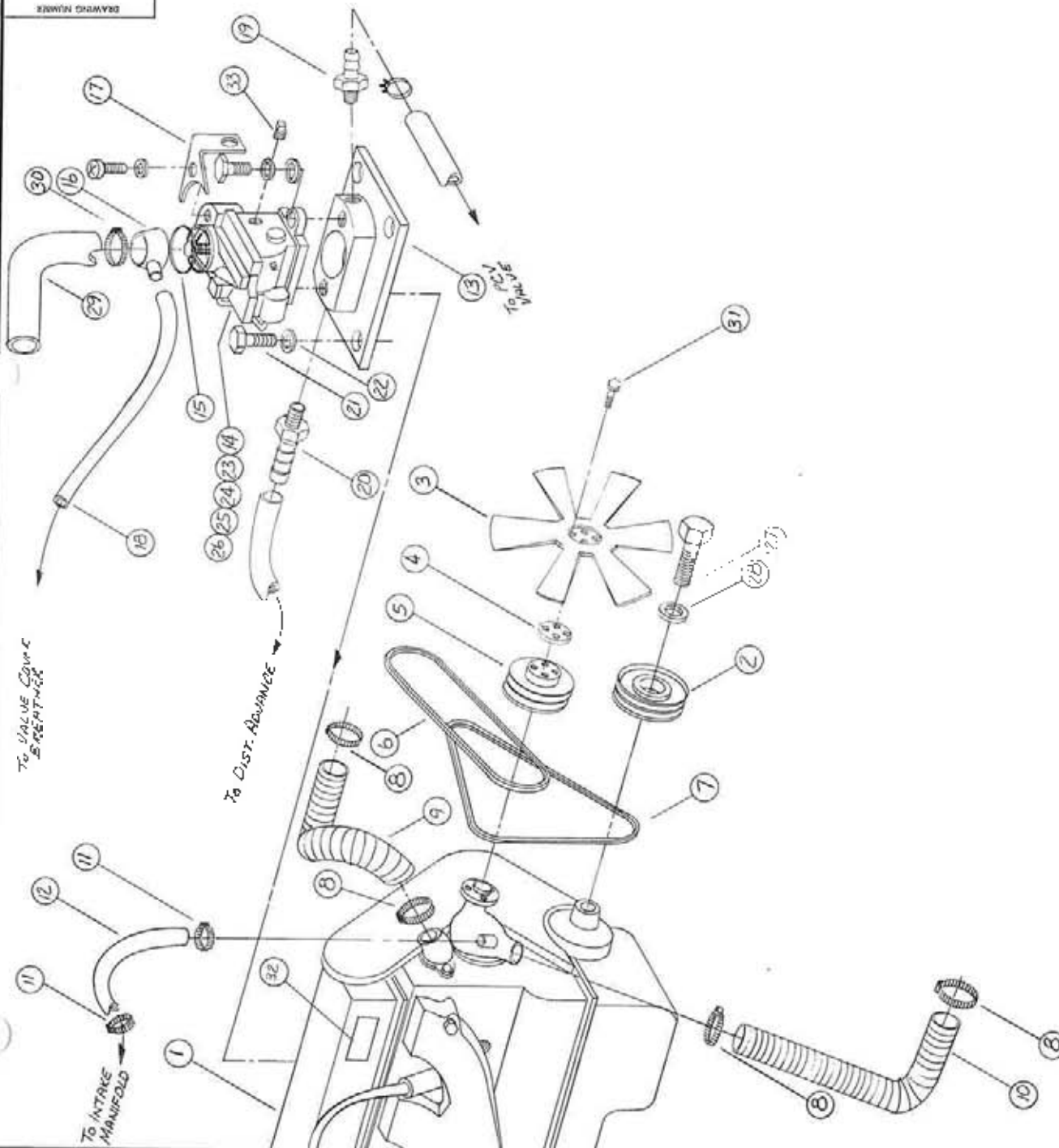
R. W. Hagie, President
Hagie Manufacturing Company

INDEX

Page	Description
1	Radiator - Oil Cooler Assembly
2	Left Side Engine Assembly
3	Forward Engine Assembly
4	Rear Engine Assembly
5	Hydrostatic Control Rod Assembly
6	Gas Tank Assembly
7	Gas Line Assembly
8	Oil Tank Assembly
9	Cross Filter Assembly
10	Return Manifold Assembly
11	Large Hydraulic Manifold Assembly (High Pressure)
12	High Pressure Tee Assembly
13	Four-Wheel Drive Valve Assembly
14	Engine Shield Assembly
15	Engine Hood Assembly
16	Rear Engine Shield Assembly
17	Slow Moving Vehicle Sign
18	Instrument Panel Assembly
19	Seat Plate Assembly
20	285 Gallon Spray Tank Assembly
21	Solution Valve Assembly
22	Boom Transom Assembly
23	Upper Parallel Arm Assembly
24	Forty Foot Outer Boom Assembly
25	Steering Verticle Link Assembly
26	Drag Link Assembly
27	Four-Wheel Drive Front Upper Leg Assembly
28	Two-Wheel Drive Front Upper Leg Assembly
29	Upper Rear Leg Assembly
30	Upper Support Arm - Lower Tie Channel
31	Right and Left Rear Half Yoke Assembly
32	Two-Wheel Drive Front Half Yoke Assembly
33	Four-Wheel Drive Front Half Yoke Assembly
34	24" Tire and Rim Assembly
35	20" Tire and Rim Assembly
36	Miscellaneous Engine Components
37	Boom Lift Cylinder Assembly
38	Boom Swing Cylinder Assembly
39	Boom Leveler Cylinder Assembly
40-41	Four-Wheel Drive Hydraulic Schematic
42-43	Two-Wheel Drive Hydraulic Schematic
44	Electrical Schematic
45-46	Manufacturers Warranty

NO.	DATE	BY

DRAWING NUMBER



33	1	520600001	1/8 INPT PIPE PLUG
32	1	390371PO1	IDENTIFICATION TAB
31	4	473816PO1	8mm x 25 mm BOLT
30	1	520068PO1	# 32 HOSE CLAMP
29	1	310906PO1	BREATHER HOSE
28	1	312331PO1	CRANK SHAFT HOSE
27	1	312332PO1	CRANK SHAFT BOLT
26	1	900006251	1/4 IN x 1 3/4 BOLT
25	2	92101021	5/16 LOCK WASHER
24	2	92000111	5/16 FLAT WASHER
23	2	90069251	5/16 x 1" Hex BOLT
22	3	92101021	5/16 LOCK WASHER
21	3	473816PO1	8mm x 25mm Hex Bolt
20	1	712320PO1	1/4 INPT x 1/2 HOSE BRG
19	1	711000PO1	1/4 INPT x 1/2 HOSE BRG
18	1	957090180	1/4 INPT x 1/2 HOSE BRG
17	1	310903PO1	1/4 INPT x 1/2 HOSE BRG
16	1	310876PO1	DASH PRT BKT WLD
15	1	629720PO1	BREATHER HOSE HOSE
14	1	312302PO1	CLAMP
13	1	310858PO1	CLAMP HOSE PULLEY
12	1	959030400	5/8 INPT HOSE BRG
11	2	520071PO1	HOSE CLAMP
10	1	310914PO1	BOX END HOSE - 1F-34
9	1	310882PO1	TOP END HOSE - 1F-33
8	4	520085PO1	# 24 HOSE CLAMP
7	1	147425PO1	ALT. BELT - 31425
6	1	147340PO1	GOV. BELT - 31400
5	1	312306PO1	FAN PULLEY
4	1	310875PO1	FAN SPACER
3	1	312332PO1	FAN - DRILLED
2	1	141079PO1	PULLEY
1	1	312300PO1	BASIC ENGINE

HAGIE MANUFACTURING CO.
 SHARON, IOWA 50525

DESCRIPTION
FORWARD ENGINE ASSEMBLY

DRAWN BY **LINDSEY G.** SCALE **NONE**

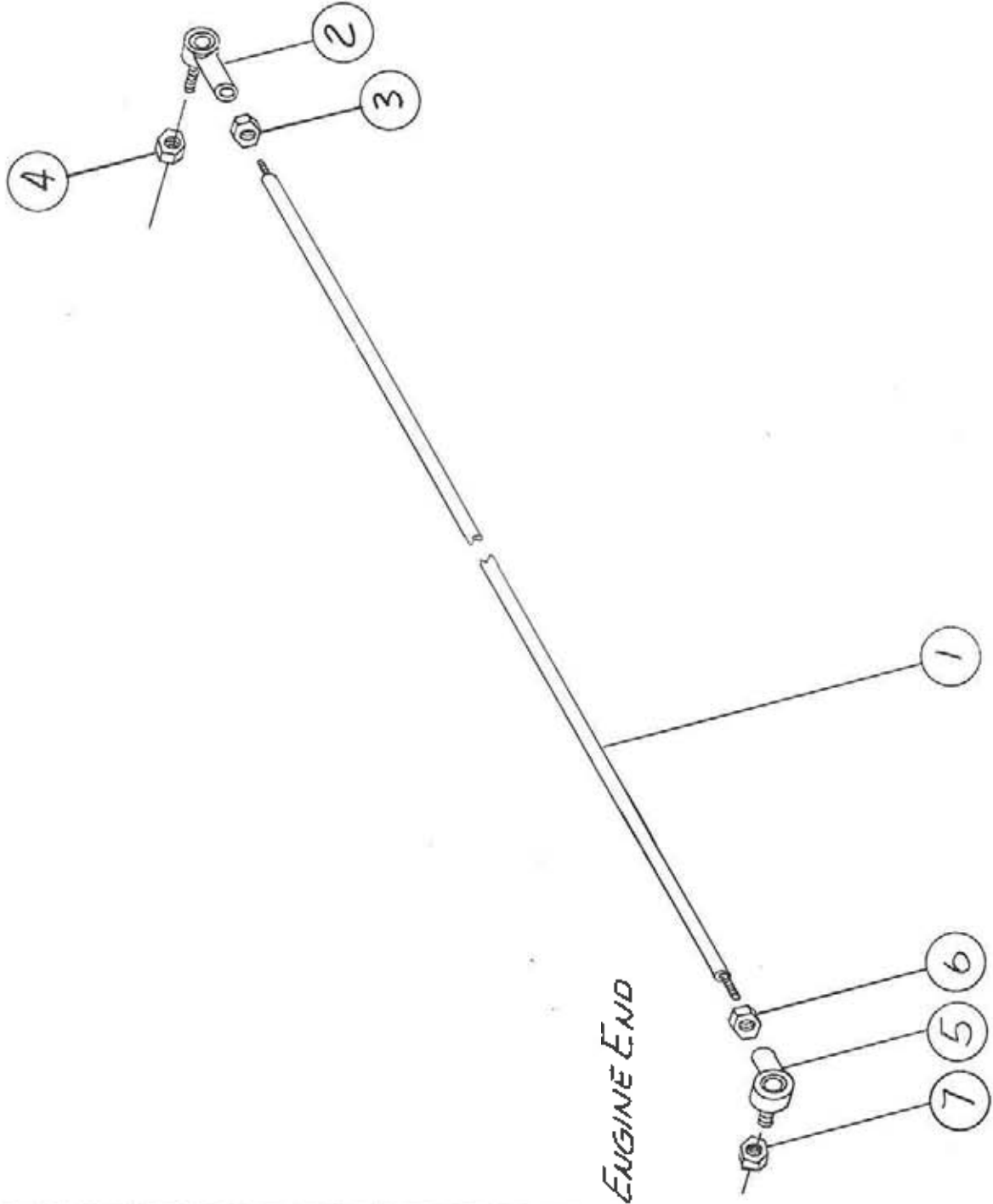
CHECKED BY
PART OF
310613104

DATE **11-20-76**

SHEET **01**

606787K01
DRAWING NUMBER

NO	DATE	BY	REVISION

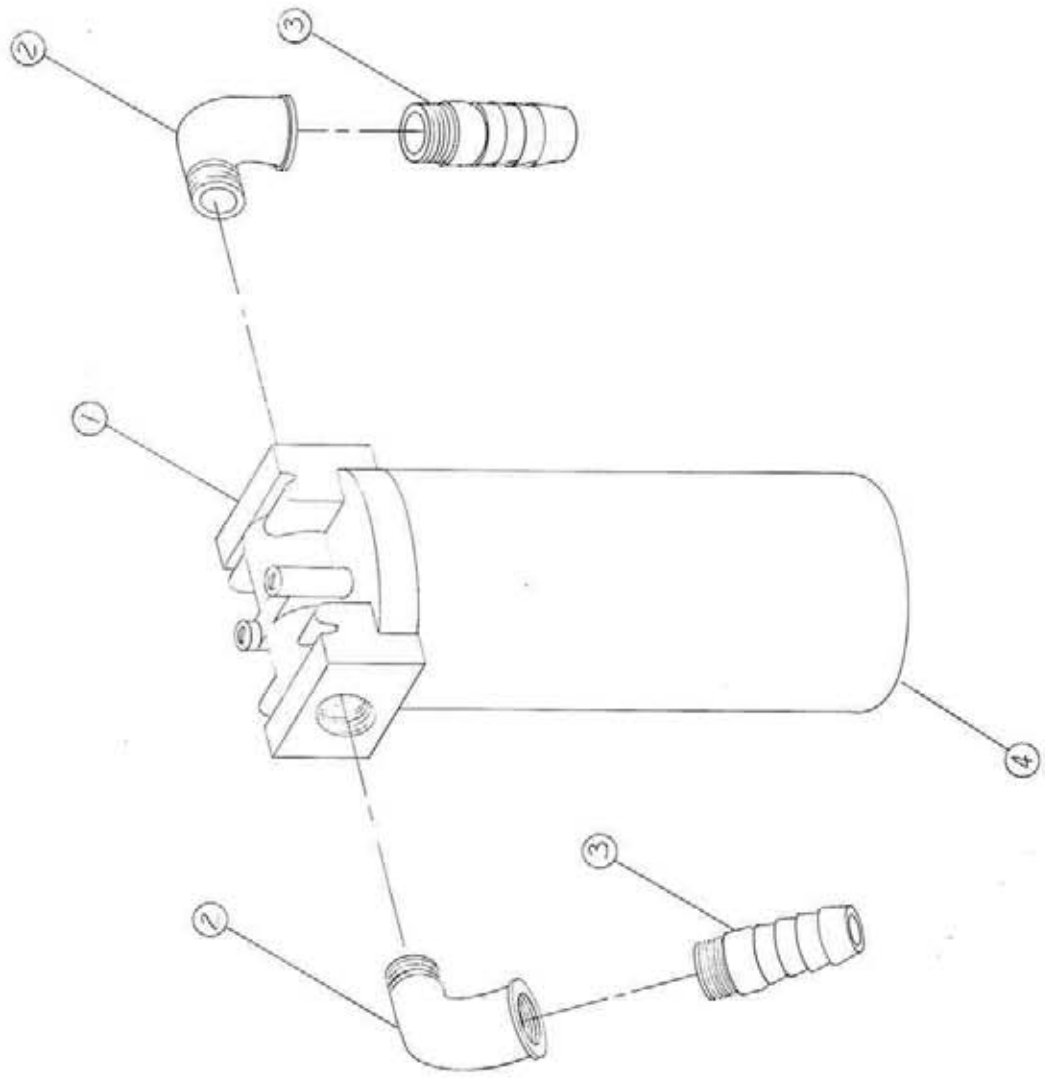


7	1	914003251
		5/16-18 STOVER NUT
6	1	910003251
		5/16-24 HEX NUT
5	1	473924P01
		5/16-24 BALL JOINT
4	1	914001251
		1/4 UNF STOVER NUT
3	1	910001251
		1/4 UNC HEX NUT
2	1	473918P01
		1/4-28 BALL JOINT
1	1	606785K01
		LONG HYD CONTROL ROD

DTL	REQ	PART NUMBER	DESCRIPTION
HMC			
HAGIE MANUFACTURING CO. CLARION, IOWA 50525			
DESCRIPTION HYD. CONTROL ROD ASSY			
DRAWN BY		SCALE	
LINDSEY		NONE	
CHECKED BY		APPROVED BY	
DATE	11-26-76	DRAWING NUMBER	606787K01
SHEET	1	OF	1

NO.	DATE	BY	CHK

614214K01
DRAWING NUMBER



QTY	P/N	DESCRIPTION
4	605502P01	FILTER ELEMENT
3	715560P01	1/4" NPT x 1/4" HOSE BARB
2	506400P01	1 1/4" - 90° STREET EL
1	605501P01	CROSS FILTER - W/BASE

HAGIE MANUFACTURING CO.
CLARION, IOWA 50525

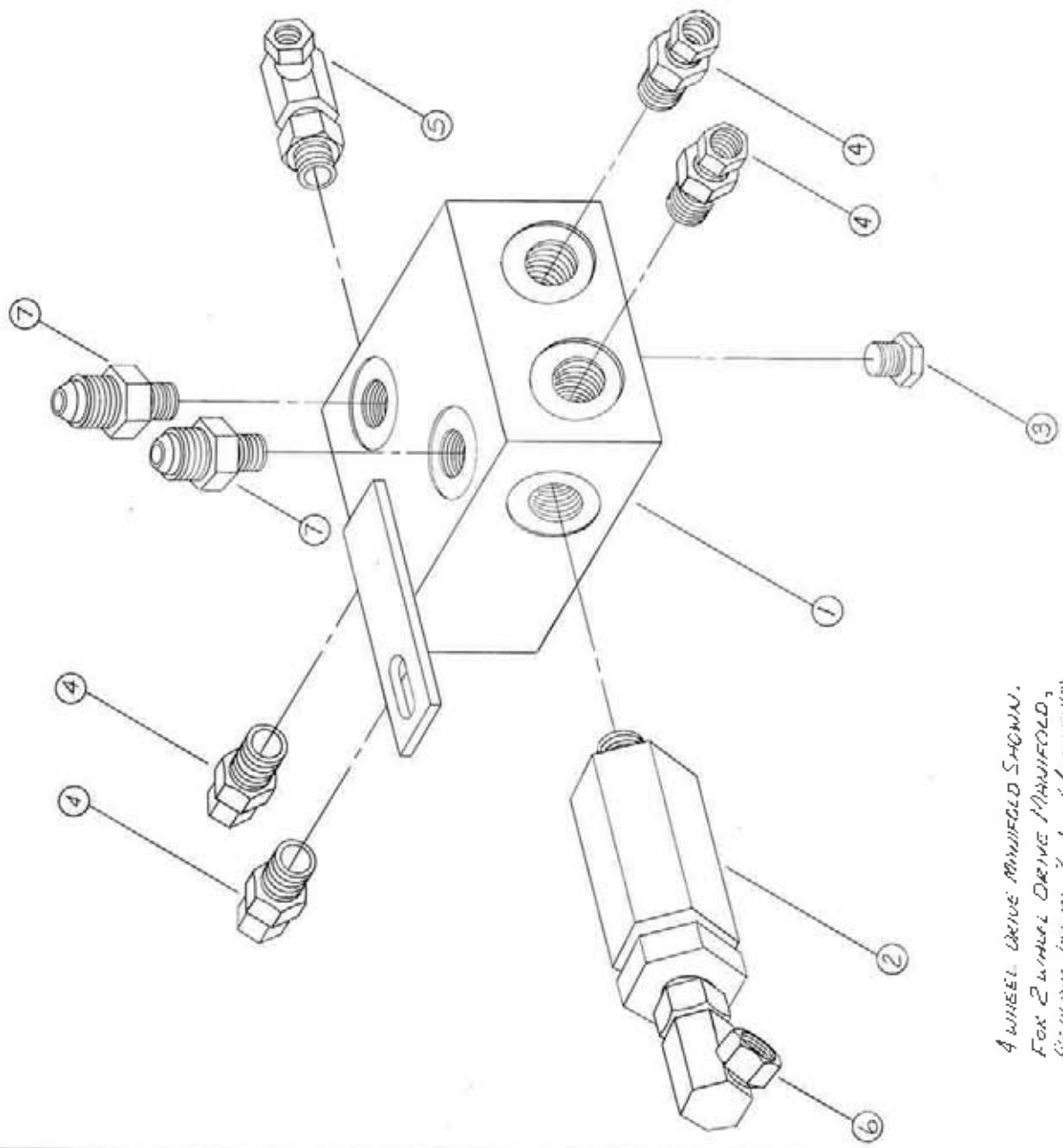
DESCRIPTION
1 1/4" CROSS FILTER ASSY - 40 GPM

DRAWN BY: L. MOSSEY G.
SCALE: None
CHECKED BY: [blank]
DRAWING NUMBER: 614214K01

DATE: 3-24-76
SHEET: [blank] OF [blank]

NO.	DATE	BY	CHKD.

DRAWING NUMBER
614196K03-2ND
614197K02-4ND



4 WHEEL DRIVE MANIFOLD SHOWN.
FOR 2 WHEEL DRIVE MANIFOLD,
REFERENCE DIMS 2, 3, 5, 6 WITH (7)
1/16" MIN. PLUGS - IN 614196K01.

QTY	NO.	DESCRIPTION
2	611127P01	1/16" NOK x 1/16" M.J.D
1	611119P01	1/8" NOK 90° 1/2 NPSM
1	618100P01	1/16" NOK 90° 1/2 NPSM
4	618075P01	1/16" NOK x 1/2 NPSM
1	610185P01	9/16" NOK PLUG
1	610028P01	1/8" SPIN FLO. COUPLER
1	619003K02	CO. HED. MANIF. H.O.D.

HAGIE MANUFACTURING CO.
CLARION, IOWA 50525

DESCRIPTION <i>Co. Hydraulic Manifold Assembly</i>	
DRAWN BY <i>LINDSEY Co.</i>	SCALE <i>1:1</i>
CHECKED BY	DRAWING NUMBER <i>614196K03-2ND</i>
DATE <i>3-31-76</i>	DRAWING NUMBER <i>614197K02-4ND</i>
SHEET	OF

NO.	DATE	BY	IN

606770K01
DRAWING NUMBER

QTY	FIG	DESCRIPTION
2	9/4004251	3/8-16 S TOVEREALUT
7	900070251	3/8-16 x 2 1/2 HEX BOLT
6	606771M01	4 WD VALVE MOUNT
5	614198P01	1/2" TUBE ASSY
4	618287P01	1/2 MAX. 1/2 MUC x 1/2 WPT
3	611126P01	1/2 MAX. x 1/2 MUC
2	611119P01	1/2 MAX. 90° 1/2 NPT-M
1	606601P01	4 WD VALVE

HAGIE MANUFACTURING CO.
CLARION, OHIO 43925

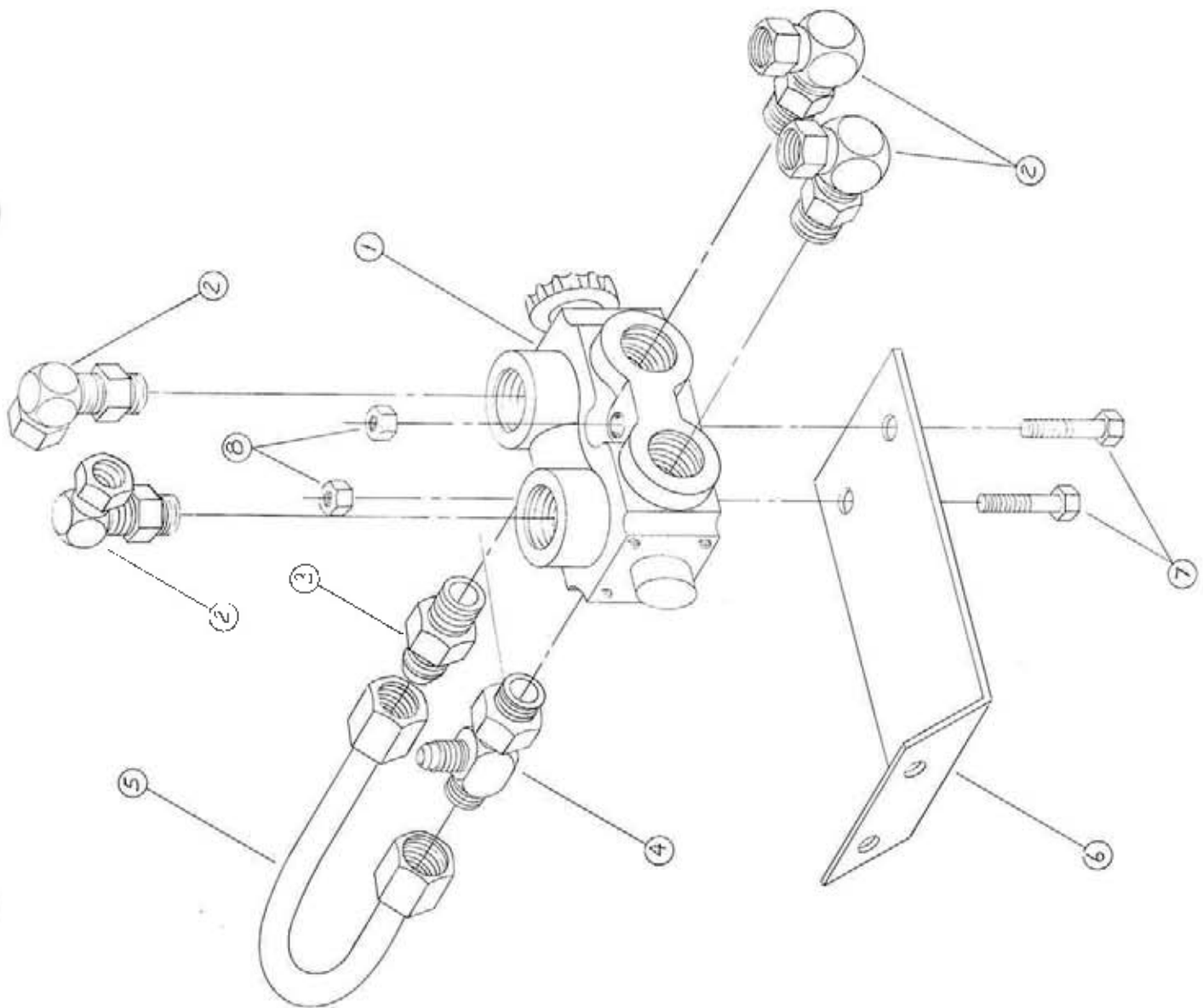
DESCRIPTION
4-WHEEL DRIVE VALVE ASSEMBLY

DRAWN BY C. MADSEY G. SCALE 1:1

CHECKED BY DRAWING NUMBER

BATT 4-6-76 606770K01


SHEET OF

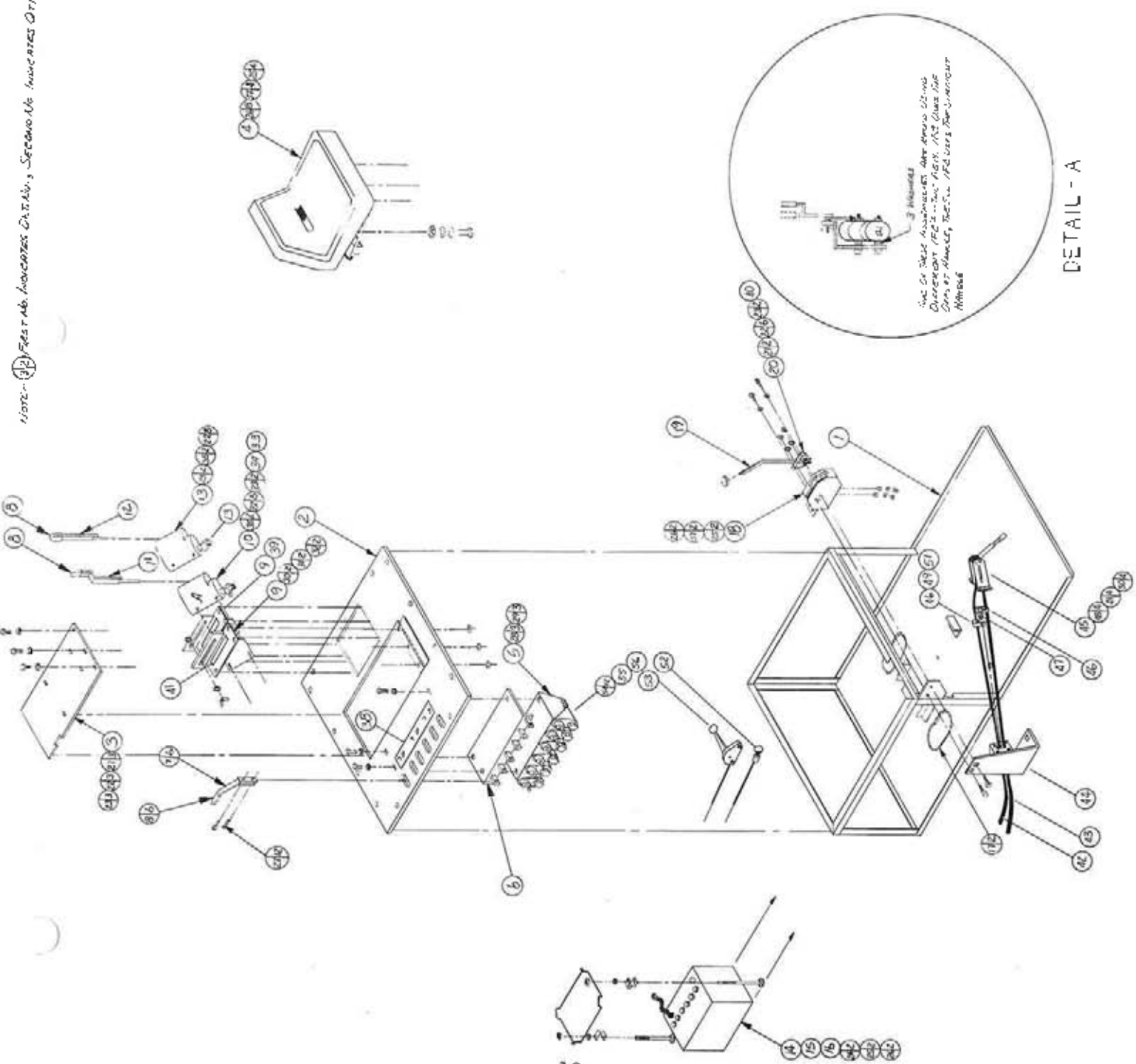


NOTE: (1) FEELER AB. INCREASES DUE TO SECONDS INCREASES DUE TO

NO.	DATE	BY	REVISION
656729K02			

QTY	PART NUMBER	DESCRIPTION
516	1	418150201 3/4" Hex. B. Nut
55	1	64872701 3/4" Hex. x 3/4" Dia.
54	12	118109201 3/4" Hex. x 1/2" Dia.
53	1	78000101 TENSILE CHAIN
52	1	18000001 CHAIN CABLE
51	1	90000001 5/8" x 1/2" Hex. Bolt
50	4	20000011 3/4" x 1/2" Hex. Bolt
49	5	14000001 3/4" x 1/2" Hex. Bolt
48	4	90000001 3/4" x 1/2" Hex. Bolt
47	2	10000001 CLEAR BR.
46	1	10000001 CLEAR BR.
45	2	10000001 CLEAR BR.
44	1	82610901 BRASS CHAIN CLIP
43	1	82610901 BRASS CHAIN CLIP
42	1	82610901 BRASS CHAIN CLIP
41	1	82610901 BRASS CHAIN CLIP
40	1	57000001 1/2" DIA. CHAIN CLIP
39	1	65992001 ALUM. CHAIN CLIP
38	1	65992001 ALUM. CHAIN CLIP
37	6	90000001 3/4" x 1/2" Hex. Bolt
36	18	47834901 3/4" x 1/2" Hex. Bolt
35	4	90000001 3/4" x 1/2" Hex. Bolt
34	1	61822501 3/4" x 1/2" Hex. Bolt
33	1	61822501 3/4" x 1/2" Hex. Bolt
32	2	81190001 3/4" x 1/2" Hex. Bolt
31	2	90000001 3/4" x 1/2" Hex. Bolt
30	2	90000001 3/4" x 1/2" Hex. Bolt
29	3	90000001 3/4" x 1/2" Hex. Bolt
28	3	90000001 3/4" x 1/2" Hex. Bolt
27	12	47000001 3/4" x 1/2" Hex. Bolt
26	12	32000001 3/4" x 1/2" Hex. Bolt
25	6	94000001 3/4" x 1/2" Hex. Bolt
24	2	90000001 3/4" x 1/2" Hex. Bolt
23	9	90000001 3/4" x 1/2" Hex. Bolt
22	25	90000001 3/4" x 1/2" Hex. Bolt
21	5	90000001 3/4" x 1/2" Hex. Bolt
20	1	60611201 1/2" DIA. CHAIN CLIP
19	1	60611201 1/2" DIA. CHAIN CLIP
18	1	60611201 1/2" DIA. CHAIN CLIP
17	2	90000001 3/4" x 1/2" Hex. Bolt
16	1	29000001 CHAIN STOP
15	1	29000001 CHAIN STOP
14	1	90000001 3/4" x 1/2" Hex. Bolt
13	1	61822501 3/4" x 1/2" Hex. Bolt
12	1	60611201 1/2" DIA. CHAIN CLIP
11	1	60611201 1/2" DIA. CHAIN CLIP
10	2	60700001 1/2" DIA. CHAIN CLIP
9	2	60700001 1/2" DIA. CHAIN CLIP
8	6	60611201 1/2" DIA. CHAIN CLIP
7	6	60611201 1/2" DIA. CHAIN CLIP
6	1	60611201 1/2" DIA. CHAIN CLIP
5	1	60611201 1/2" DIA. CHAIN CLIP
4	1	33000001 SEAT W/ TENSION BAR
3	1	45600001 1/2" DIA. CHAIN CLIP
2	1	45600001 1/2" DIA. CHAIN CLIP
1	1	656729K02 SEAT RATE ASSEMBLY

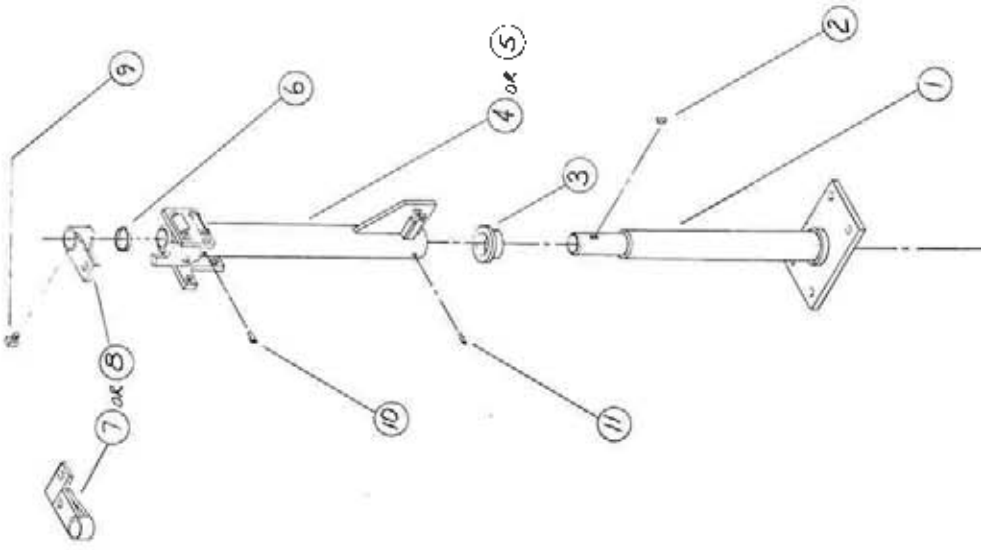
	
HMC HAGIE MANUFACTURING CO. CARBON, IOWA 50315	
SEAT RATE ASSEMBLY	
DRAWN BY LAMONEY	SCALE NONE
CHECKED BY	APPROVED BY
DATE 11-30-76	DRAWING NUMBER 656729K02
SHEET 1 OF 1	



DETAIL - A

NO.	DATE	BY	REVISION

DRAWING NUMBER
357577K03 ~ RT.
357576K03 ~ LT.



NOTE ~ LEFT SIDE ASSY IS SIM. OPPOSITE AS RIGHT SIDE ~ (RIGHT SIDE SHOWN)

11	1	471026.P01	1/4-28 x 1 1/4 Grease Zerk
10	1	471025.P01	1/4-28 x 1 1/4 Grease Zerk
9	1	470065.P01	1/4 x 1/4 Sq. Hd. SET SCREW
8	1	740418.K01	Rt. STEERING ARM W/ID
7	1	740414.K01	Lt. STEERING ARM W/ID
6	1	129035.P01	TOP LEG SEAL
5	1	357572.K03	RIGHT LEG WELDMENT
4	1	357575.K03	LEFT LEG WELDMENT
3	1	127500.P01	THRUST BEARING
2	1	471025.P01	1/4 x 1 1/4 LOCKWASH KEY
1	1	357612.K01	INNER LEG TUBE W/SHOULDER
QTY.	REQ.	QTY.	DESCRIPTION

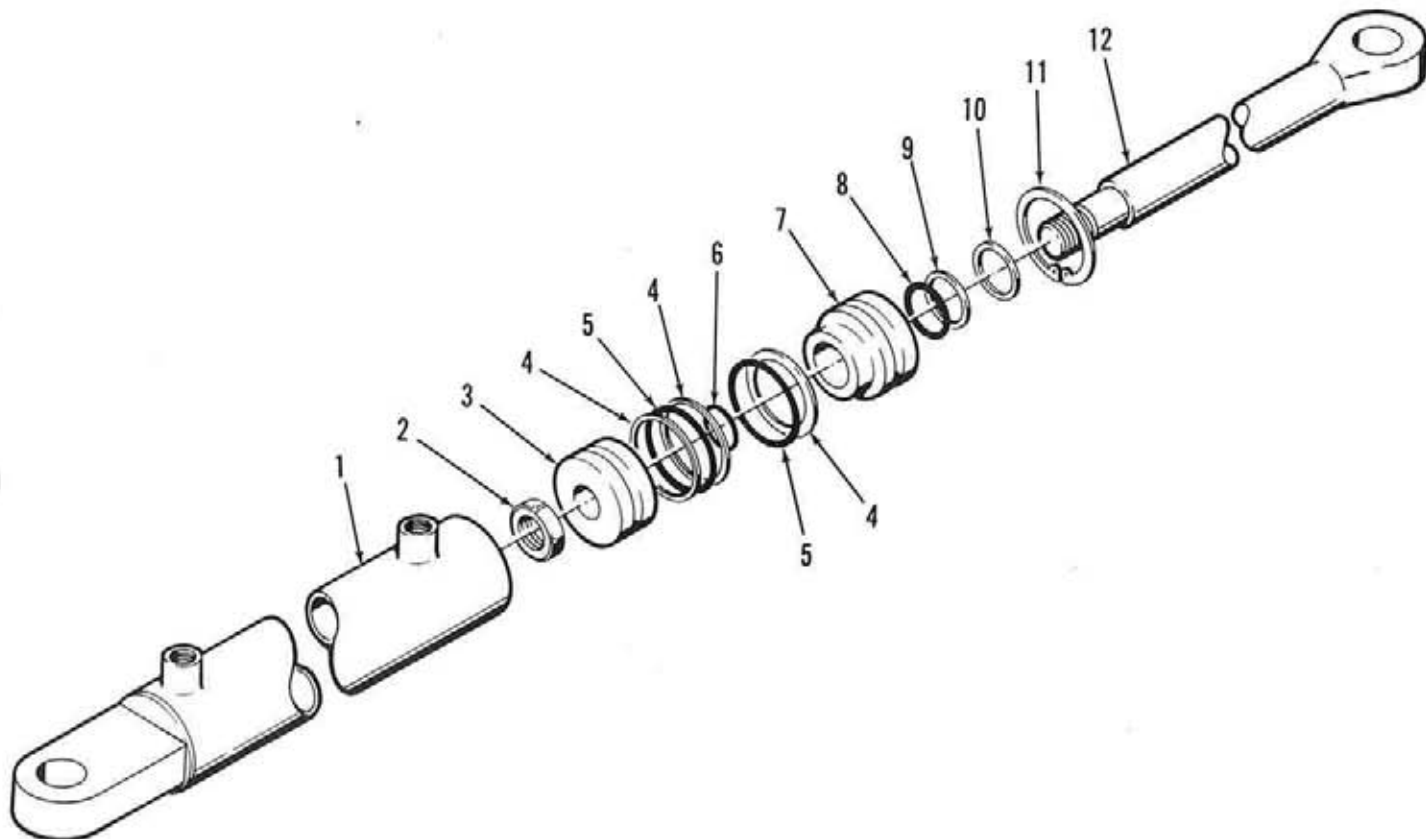
HAGIE MANUFACTURING CO.
CLARION, IOWA 50525

DESCRIPTION
4 WHEEL DRIVE FT. UPPER LEG ASSY

DRAWN BY	LINDSEY G.	SCALE	NONE
CHECKED BY		DRAWING NUMBER	357577K03 ~ RT.
DATE	11-20-76		357576K03 ~ LT.
SHEET		OF	



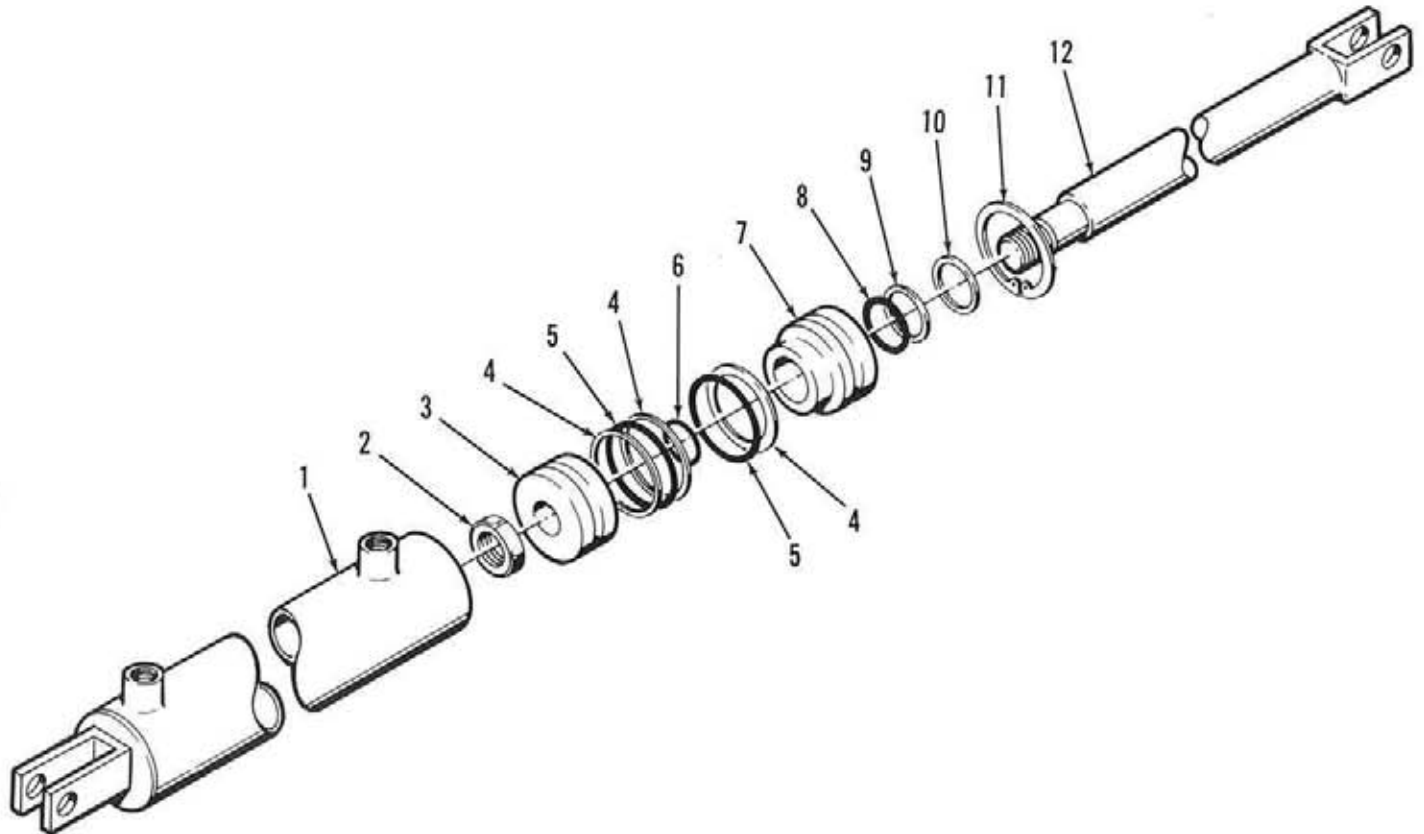
Boom Lift Cylinder Assembly / 620504K01



Item Number	Part Number	Description	Quantity
1	620508K01	TUBE (weldment)	1
2	472297P01	NUT, LOCK, 3/4 - 16	1
3	620081P03	PISTON	1
4	890326P01	WASHER, BACK-UP, 1-5/8 x 2 in.	3
5	870326P01	O-RING, 1-5/8 x 2 in.	2
6	870113P01	O-RING, 9/16 x 3/4 in.	1
7	620082P05	GLAND	1
8	870214P01	O-RING, 1 x 1-1/4 in.	1
9	890214P01	WASHER, BACK-UP, 1 x 1-1/4 in.	1
10	629003P01	WIPER, 1 x 1-1/4 x 1/8 in.	1
11	629505P01	RING, SNAP, 2 in.	1
12	620505K01	SHAFT (weldment)	1



Boom Leveler Cylinder Assembly / 620090R02



Item Number	Part Number	Description	Quantity
1	620091K01	TUBE (weldment)	1
2	472297P01	NUT, LOCK, 3/4 - 16	1
3	620081P03	PISTON	1
4	890326P01	WASHER, BACK-UP	3
5	870326P01	O-RING	2
6	870113P01	O-RING	1
7	620082P05	GLAND	1
8	870214P01	O-RING	1
9	890214P01	WASHER, BACK-UP	1
10	629003P01	WIPER	1
11	629605P01	RING, SNAP	1
12	620093K02	SHAFT (weldment)	1

470 Four-Wheel Drive

Ref Part No.	Qty	Description	Ref Part No.	Qty	Description
1	760360K01	1 Hyd Oil Tank	50	614103P01	1 Hose - Agi VFC to Valve
2	610033P01	1 Sundstrand Pump	51	614104P01	1 Hose - Pump to Agi VFC
3	614003K02	1 Large Hyd Manifold	52	614105P01	1 Hose - Agi VFC to Motor
4	618088P01	1 Oil Cooler	53	614106P01	1 Hose - Motor to Agi VFC
6	607505P01	2 Vari Flo Control	54	614107P01	1 Hose - Pump to Sol VFC
7	690000P01	1 Flomax Pump	55	614108P01	1 Hose - Sol VFC to Pump
8	604004P01	1 Hyd Agi Motor	56	614109P01	1 Hose - Pump to Sol VFC
9	606600P01	1 Ces 6 Spool Valve	57	614110P01	1 Hose - Sol VFC to Tank
10	615000K02	1 Return Manifold	58	614153P02	2 Hose - F.W.D. Valve to Tee
11	610030P01	1 Sund Whl Mtr #18 w/Ext Shaft	59	614112P02	4 Hose - Whl Mtr to Manif
12	610031P01	1 Sund Wheel Mtr #18	60	614113P02	1 Hose - Lt Rear Case Drain
13	620504R01	2 Lift Cylinder	61	614114P02	1 Hose - Rt Rear Case Drain
14	605601P01	2 Cross Filter 10 Mic-40 GPM	62	614116P02	1 Hose - Rt Front Case Drain
15	620090R01	4 Level Cylinder	63	614117P02	1 Hose - Lt Front Case Drain
16	620400P01	1 Pwr Strg Cylinder	64	614118P02	1 Hose - Manif to RH Tee
17	607000P01	1 Pwr Strg Actuator	65	614119P02	3 Hose - Flo Control to LH Tee
18	618208P01	1 16 GPM Flo Control	66	614152P01	1 Hose - Charge Pressure
19	606601P01	1 F.W.D. Valve	67	614121P02	2 Hose - Tee to Front Whl Mtr
20	618206P01	1 Cessna Aux Pump	69	614093P02	1 Hose - Oil Cooler to Tank
21	505112P01	1 Red El - 1 NPT x 3/4 FNPT	70	614150P01	1 Pwr Strg Pressure
22	610029P01	2 Sund Whl Motor #15	71	614151P01	1 Pwr Strg Return
23	506410P01	2 1 1/4 NPT - 90° - Street El	72	602100P01	2 Pwr Strg Jumper
24	618304P01	1 7/16 MOR x 9/16 MJIC	73	618276P01	1 3/8 NPT Br x 3/8 NPSM "T"
25	505213P01	4 Red Bushing 1 NPT x 3/4	74	611122P01	8 1/4 NPT 90° 9/16 MJIC
26	618130P01	1 7/8 MOR Run Tee	75	618047P01	4 3/4 MOR x 1/2 NPSM
27	618275P01	1 7/8 MOR x 3/8 FNPT	76	618062P01	4 1/2 NPT 90° 1/2 NPSM
28	618109P01	12 3/4 MOR x 9/16 MJIC	77	619009P01	2 1/2 NPT x 1/2 NPSM
29	618172P01	1 7/8 MOR x 9/16 FOR	78	619011P01	9 7/8 MOR 90° 1/2 NPSM
30	618302P01	2 1 5/16 MOR 90° x 1 1/16 MJIC	79	611126P01	1 7/8 MOR x 7/8 MJIC
31	611127P01	2 1 1/16 MOR x 1 1/16 MJIC	80	618100P01	1 1 1/16 MOR 90° 1/2 NPSM
32	618095P01	4 1 1/16 MOR x 1/2 NPSM	81	618303P01	4 1 5/16 MOR x 7/8 FOR
33	614198P01	1 F.W.D. U-Tube Assy	82	618075P01	1 1 1/16 MOR x 3/4 Hose Barb
34	618156P01	1 3/4 NPT - 90° - 7/8 MJIC	83	505099P01	1 1" NPT Side Outlet "T"
35	618287P01	1 7/8 MOR x 7/8 MJIC x 9/16 Tee	84	713220P01	1 3/4 NPT x 3/4 Hose Barb
36	618008P01	1 1 1/16 MOR x 3/4 FNPT	85	505005P01	1 1" NPT x 1/2 NPT Red Bushing
37	614047K01	2 Hi Press Tee 1/2 Wld	86	618090P01	1 1 5/16 MOR x 1" FNPT
38	610185P01	2 9/16 O-Ring Plug	87	506400P01	1 1 NPT 90° 1 1/4 FNPT St El
39	614089P01	1 Hyd Tube - Short	88	715660P01	4 1 1/4 Hose Barb x 1 1/4 NPT
40	614091P01	1 Hyd Tube - Long	89	506201P01	1 1 1/4 Pipe Coupling
41	952200067	1 Hose - Filt to Sund 1 1/2 x 7/2	90	952200270	1 Hose - Tank to Cross Filter
42	614095P02	1 Hose - Ret Manif to Cooler	NS	605600P01	1 In Tank Oil Filter
43	614096P02	1 Hose - Sund Pump Case Drain	NS	605603P01	1 Oil Diffuser
44	952120130	1 Hose - Tank to Aux Pump 3/4 x 13	NS	503700P01	1 1/2 NPT Pipe Plug - In Tank
45	614098P01	4 Hose - Valve to Right Fold	NS	505206P01	1 1" NPT x 7 Niopple - In Tank
46	614099P01	2 Hose - Valve to LH Lift	NS	505200P01	1 1" NPT St El 90° - In Tank
47	614100P01	2 Hose - Valve to LH Fold	91	504610P01	2 3/4 NPT 90° St Elbow
48	614101P01	2 Hose - Valve to RH Lift	92	611121P01	4 1/4 NPT x 9/16 MJIC
49	614102P01	2 Hose - Valve to RH Level	93	618150P01	1 9/16 MOR x 1/4 NPSM
			NS	611159P01	4 3/4 MOR Plug

HAGIE MANUFACTURING COMPANY NEW EQUIPMENT WARRANTY

A. WHAT IS WARRANTED.

Hagie Manufacturing Company (Hagie) makes the following warranties to the original purchaser of each item of new Hagie equipment. Equipment which has been used for demonstration purposes for less than one hundred (100) hours is "new" for this purpose. All parts of Hagie equipment--except tires, tubes, engines and batteries--which are defective in material or workmanship as delivered to purchaser will be repaired or replaced as Hagie elects without charge for parts and labor if a defect appears within twelve (12) months from the date of delivery of the equipment to the original purchaser. Parts or rebuilt assemblies which are furnished under the terms of this warranty will not be warranted beyond the original warranty period. Exceptions to the conditions described in this section must be specifically covered by a separate warranty certificate.

B. SECURING WARRANTY SERVICE.

Warranty service can be performed by Hagie authorized personnel only. At the time of requesting warranty service, the purchaser must present evidence of the date of delivery of the equipment. The purchaser shall pay any premium for overtime labor requested by the purchaser, any charge for making service calls and for transporting the equipment to and from the place where the warranty work is performed.

C. ITEMS NOT COVERED BY HAGIE WARRANTY.

Used equipment is not warranted by Hagie unless it is specifically covered by separate warranty certificates. Tires, tubes, engines and batteries sold on or with Hagie equipment are not warranted by Hagie and, if new, are ordinarily warranted by the manufacturers thereof.

D. UNAPPROVED SERVICE OR MODIFICATION.

All obligations of Hagie Manufacturing Company under this warranty shall be terminated:

1. If service other than normal maintenance or normal replacement of service items is performed by someone other than Hagie authorized personnel, or
2. If equipment is modified or altered in ways not approved by Hagie Manufacturing Company.

E. ACCIDENTS AND NORMAL MAINTENANCE.

Only defective material and workmanship are covered by this warranty. It does not cover depreciation or damage caused by normal wear, accident, improper maintenance, improper protection in storage or improper use. The cost of normal maintenance and normal replacement of service items--such as filters, ignition parts, belts, hoses, etc.--shall be paid for by the purchaser.

F. NO REPRESENTATIONS OR IMPLIED WARRANTY.

The parties agree that the implied warranties of MERCHANTABILITY and fitness for a particular purpose and all other warranties, express or implied, are EXCLUDED from this transaction and shall not apply to the goods sold.

470 Two-Wheel Drive

Ref Part No.	Qty	Description	Ref Part No.	Qty	Description
1	760360K01	1 Hyd Oil Tank	42	618276P01	1 3/8 NPT Br x 3/8 NPSM "T"
2	610033P01	1 Sundstrand Pump	43	614089K01	1 Hyd Tube - Short
3	614003K02	1 Large Hyd Manifold	44	614091K01	1 Hyd Tube - Long
4	618088P01	1 Oil Cooler	45	952200067	1 Hose - Fitr to Sund Pump 1 1/4 x 7 1/2
6	607505P01	2 Vari Flo Control	46	614095P02	1 Hose - Ret Manif to Cooler
7	690000P01	1 Flomax Pump	47	614096P02	1 Hose - Sund Pump Case Drain
8	604004P01	1 Hyd Agi Motor	48	614102P01	2 Hose - Valve to RH Level
9	606600P01	1 Ces. 6 Spool Valve	49	614103P01	1 Hose - Agi VFC to Valve
10	615000K02	1 Return Manifold	50	614150P01	1 Pwr Strg Pressure
11	610030P01	1 Sund Whl Mtr #18 w/Ext Shaft	51	614104P01	1 Hose - Pump to Agi VFC
12	610031P01	1 Sund Whl Motor	52	614105P01	1 Hose - Agi VFC to Motor
13	620504R01	2 Lift Cylinder	53	614106P01	1 Hose - Mtr to Agi VFC
14	605601P01	1 Cross Filter 1 1/4 NPT	54	614107P01	1 Hose - Pump to Sol VFC
15	620090R01	4 Level Cylinder	55	614108P01	1 Hose - Sol VFC to Pump
16	620400P01	1 Power Steering Cyl	56	614109P01	1 Hose - Pump to Sol VFC
17	607000P01	1 Power Strg Actuator	57	614110P01	1 Hose - Sol VFC to Tank
18	618303P01	4 1 5/16 MOR x 7/8 FOR	58	602100P01	2 Hose - Pwr Strg Jumper
19	619011P01	4 7/8 MOR - 90° - 1/2 NPSM	59	614112P02	4 Hose - Whl Mtr to Manifold
20	505112P01	1 1 NPT x 3/4 Red Elbow	60	614113P02	1 Hose - Lt Rear Case Drain
21	618075P01	1 1 1/16 MOR x 3/4 Hose Barb	61	614114P02	1 Hose - Rt Rear Case Drain
22	713220P01	1 3/4 NPT x 3/4 Hose Barb	63	614093P02	1 Hose - Oil Cooler to Tank
23	505213P01	4 1 NPT x 3/4 Red Bushing	64	614151P01	1 Hose - Pwr Strg Return
24	618130P01	1 7/8 MOR Run Tee	65	952120130	1 Hose - Tank to Aux Pump
25	618275P01	1 7/8 MOR x 3/8 FNPT	66	614098P01	4 Hose - Valve to RH Fold
26	618109P01	12 3/4 MOR x 9/16 MJIC	67	614099P01	2 Hose - Valve to LH Lift
27	618172P01	1 7/8 MOR x 9/16 FOR	68	614100P01	2 Hose - Valve to LH Fold
28	618090P01	1 1 5/16 MOR x 1" FNPT	69	614101P01	2 Hose - Valve to RH Lift
29	506400P01	1 1 MNPT - 90° - 1 1/4 FNPT St Elbow	70	952200270	1 1 1/4 x 27 2 Br Red Hose
30	610185P01	4 9/16 MOR Plug	71	504610P01	2 3/4 NPT 90 St Elbow
31	618302P01	2 1 5/16 MOR - 90° - 1 1/16 MJIC	72	618206P01	1 Cessna Aux Pump
32	611127P01	2 1 1/16 MOR x 1 1/16 MJIC	73	611121P01	4 1/4 NPT x 9/16 MJIC
33	618095P01	4 1 1/16 MOR x 1/2 NPSM	74	618150P01	1 9/16 MOR x 1/4 NPSM
34	715660P01	4 1 1/4 NPT x 1 1/4 Hose Barb	NS	611159P01	2 3/4 MOR Plug
35	618156P01	1 3/4 NPT - 90° - 7/8 MJIC	NS	503700P01	1 1/2 NPT Pipe Plug - In Tank
36	506410P01	2 1 1/4 NPT - 90° - St Elbow	NS	505206P01	1 1 NPT x 7" Nipple - In Tank
37	618008P01	1 1 1/16 MOR x 3/4 FNPT	NS	505200P01	1 1 NPT St El - 90° - In Tank
38	506201P01	1 1 1/4 NPT Coupling	NS	605603P01	1 Oil Diffuser - In Tank
39	505005P01	1 1 NPT x 1/2 Red Bushing	NS	605600P01	1 In Tank Filter
40	505099P01	1 1 NPT Side Outlet Tee	NS	610186P01	2 1 1/16 MOR Plug - Lg Hyd Man
41	611122P01	8 1/4 NPT 90° 9/16 MJIC			